

Exélia Art

Exélia Art micro / Exélia Art micro Petite

User Guide



0459

PHONAK

life is on

Contents

Welcome	5
<hr/>	
Description	6
<hr/>	
Short introduction	
Inserting the battery	8
Switching ON/OFF	8
Selecting a hearing program	9
<hr/>	
Preparation	
Replacing the battery	10
Tamper proof battery compartment (optional)	14
Identifying left and right hearing instruments	16
Inserting your hearing system with micro tube into your ear	17
Closed domes	19
Inserting your hearing system with earmold into your ear	21
Fine tuning based on your personal preferences	24
<hr/>	
Operation	
Switching ON/OFF	25
Hearing programs	26
Synchronized manual control	28
ZoomControl	28

Telecoil (optional)	29
EasyPhone (optional)	30
<hr/>	
Wireless accessories (optional)	33
myPilot	33
iCom	35
iView	37
<hr/>	
Remote control (optional)	38
<hr/>	
FM communication (optional)	40
Dynamic FM transmitters	41
Multi-frequency FM receivers	42
MyLink	43
EasyFM	44
<hr/>	
Maintenance	45
Microphone Protector	45
Micro tube and dome	47
Important points	52
<hr/>	
Warning	55
<hr/>	
Service and Warranty	56
<hr/>	
Phonak distributors worldwide	60
<hr/>	

- ⦿ This symbol indicates features, options and accessories which are available for Exélia Art micro and not for the Exélia Art micro Petite version.

Welcome

Your new Exélia Art hearing system uses the very latest advances in digital hearing technology. Exélia Art offers you, automatically, the highest sound quality, speech understanding and listening comfort in all your hearing situations. High-tech has turned highly sophisticated hearing systems into convenient devices that are easy to use.

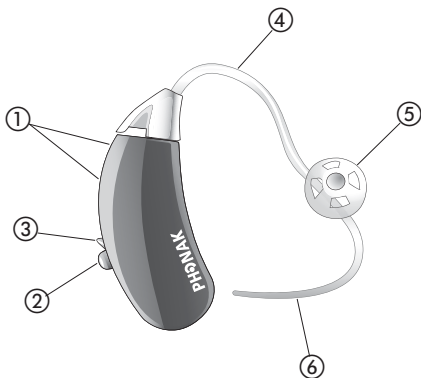
Please read this manual carefully to benefit from all the features of your new hearing system. Ask your hearing care professional if you have any questions.

Exélia Art is a quality product developed by the Swiss company Phonak, a world leader in hearing technology, innovation and reliability. With proper care and usage, your hearing system will support your hearing and communication needs for many years.

For further information, please visit the Phonak website www.phonak.com

Phonak – life is on

Description

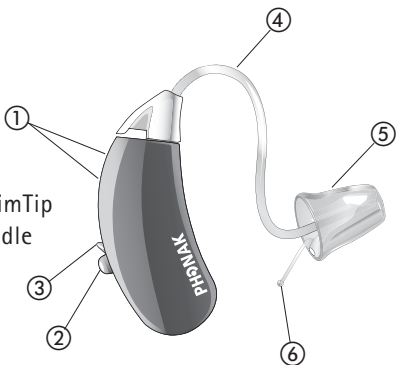


Hearing system with micro tube and dome

- ① Microphone inputs with Microphone Protector
- ② Program switch ●
- ③ Battery compartment with nail grip and ON/OFF switch
- ④ Micro tube/sound output
- ⑤ Dome
- ⑥ Retention

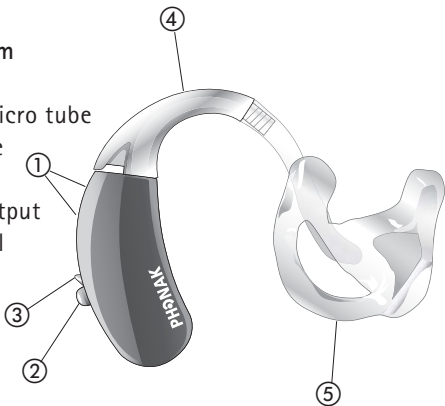
Hearing system with micro tube and SlimTip

- ① - ④ See micro tube and dome
- ⑤ Individual SlimTip
- ⑥ Removal handle



Hearing system with earmold

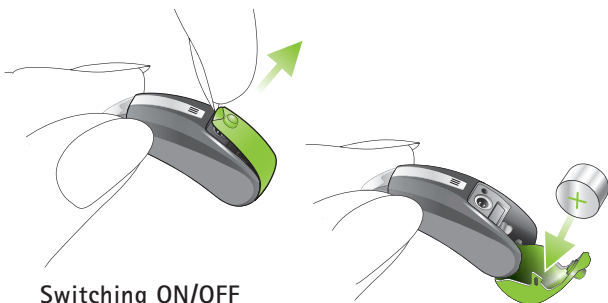
- ① - ③ See micro tube and dome
- ④ Hook / sound output
- ⑤ Individual earmold



Short introduction

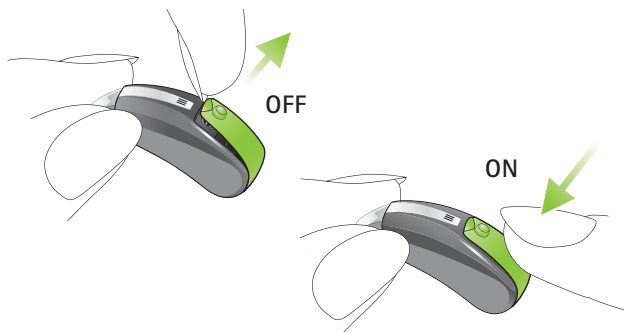
Inserting the battery

Details see page 10



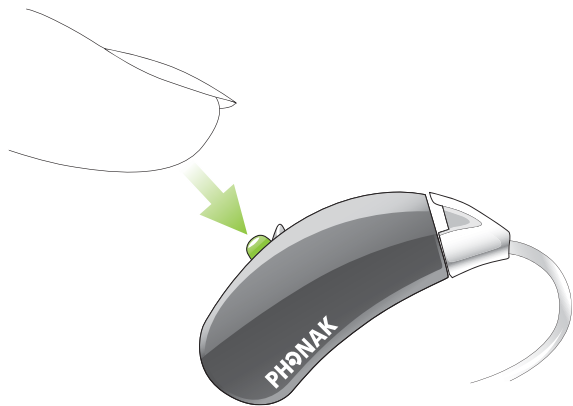
Switching ON/OFF

Details see page 25



Selecting a hearing program via Toggle

Details see page 26

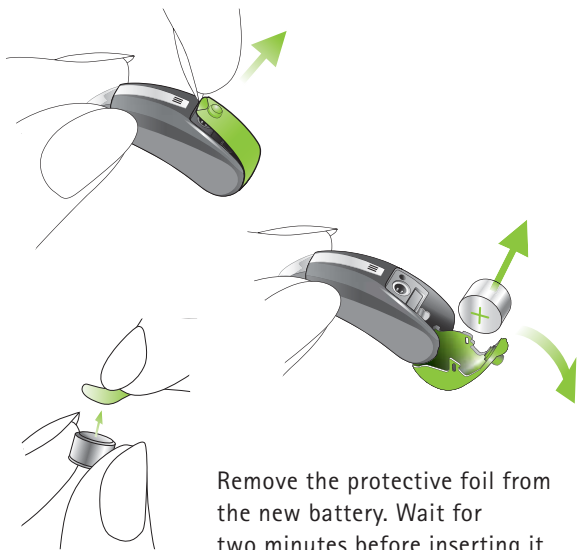


Preparation

Replacing the battery

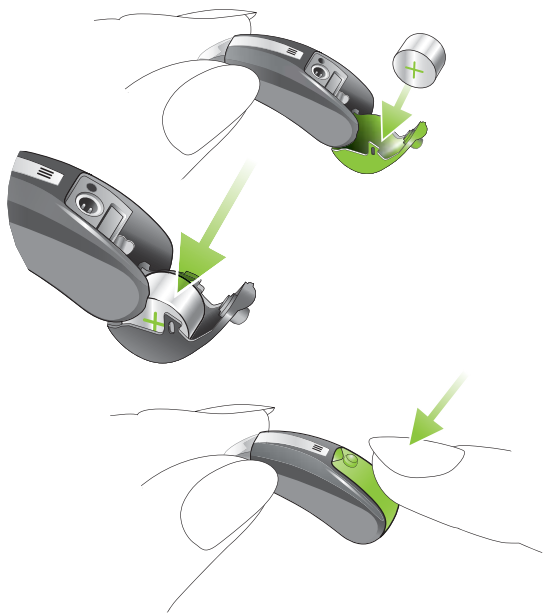
Use battery size 13 for your Exélia Art micro system.
Use battery size 10 or 312 for your Exélia Art micro Petite system (see page 12).

Using the nail grip, open the battery compartment completely and remove the old battery.



Remove the protective foil from the new battery. Wait for two minutes before inserting it.

Insert the new battery with the "+" sign (flat side of the battery) as shown below. The correct battery orientation can also be seen on the inside of the battery compartment. Close the battery compartment.



Preparation




Your Exélia Art micro Petite hearing system can be operated either with size 10 (standard) or size 312 batteries (optional). Your hearing care professional may modify the devices accordingly. The 312 battery lasts longer. The 10 battery creates an even smaller overall instrument size (refer to picture below).

10 battery





312 battery



-  Handle the battery compartment with care and do not use excessive force.
-  If there is any resistance when closing the compartment, ensure that the battery is inserted correctly. The compartment may not close properly if the battery is upside down, and the instrument will not work.
-  When your hearing system is not in use, leave the battery compartment open to allow any moisture to evaporate.

Low battery warning

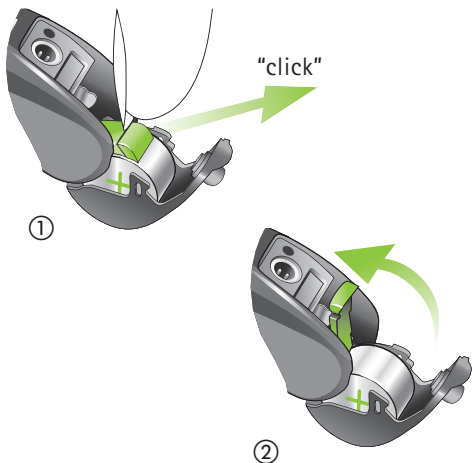
An acoustic signal gives you an early warning that the battery is approaching exhaustion. You have approximately 30 minutes to replace the battery after hearing the signal. The hearing system will repeat the low battery warning approximately every 30 minutes.

Please note that the battery consumption increases with regular use of the myPilot command center , the iCom communication interface  or the remote controls KeyPilot2 or WatchPilot2.

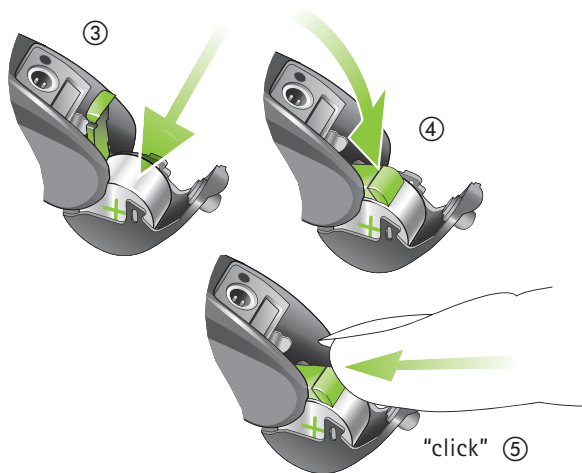
Preparation

Tamper proof battery compartment (optional)

The battery is locked inside the battery compartment for safety reasons. The latch can easily be opened with a fingernail. Place the fingernail in the groove and pull the latch away from the hearing instrument ① and then push it upwards ②.



The battery can only be inserted when the latch is open (3). Move the latch over the inserted battery so that it lies against it (4). Lock the battery by pushing towards the hearing instrument with your finger (5). Before you close the battery compartment, check that the latch is locked in position and the battery can't be removed.



Warning: The battery latch must be placed back over the battery and locked before closing the battery compartment.

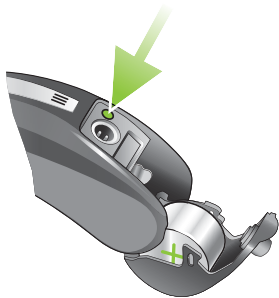
Preparation

Identifying left and right hearing instruments

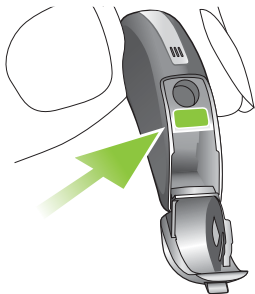
It is important to use the correct hearing instrument for each ear.

Your hearing care professional can mark the hearing instruments for you. The color code is visible when the battery compartment is opened. It will identify left and right hearing instruments as follows:

Exélia Art micro



Exélia Art micro Petite

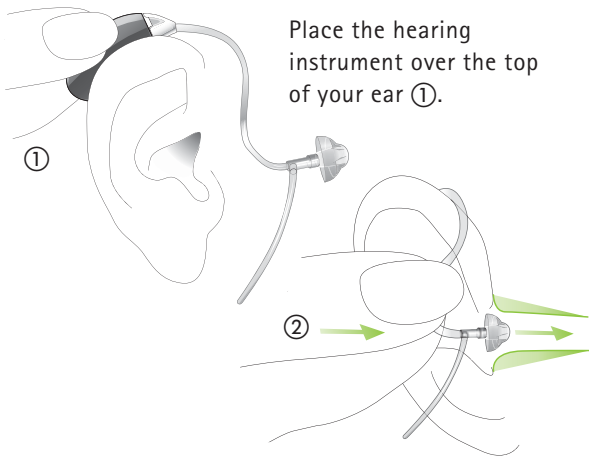


red = right hearing instrument

blue = left hearing instrument

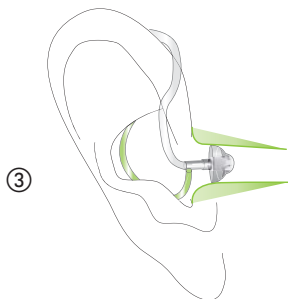
Inserting your hearing system with micro tube into your ear

Open domes and SlimTip




Hold the micro tube where it attaches to the dome or SlimTip ② and gently push the dome or SlimTip into your ear canal. The dome or SlimTip should be placed far enough into the ear so that the micro tube lies flush with your head.

Preparation



Place the retention tail (if available) of the micro tube into the bowl part of your ear ③.

To remove your hearing instrument, grasp the micro tube near the dome and pull it out of your ear gently but firmly.

-  In very rare cases, the dome can remain in the ear canal when removing the micro tube from the ear. In the unlikely case that any parts remain in the ear canal, it is strongly recommended to see a medical specialist for safe removal.

Closed domes

The closed dome has a different design than other domes (refer to pictures). The closed dome consists of two fins overlapping each other. Before inserting the closed dome into the ear canal, it is important to check the position of these fins. The larger fin must be positioned over the smaller fin ④. If the position is incorrect ⑤, you can easily adjust it. With one finger, gently bend the bigger fin forwards and then back again so that it overlaps the smaller one ⑥. Make sure that the slit of the closed dome is in a horizontal position on the tube unit ④. Your closed dome is now ready to be inserted into the ear.

Preparation

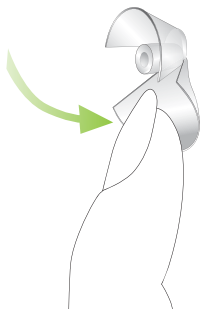
Correct position ④



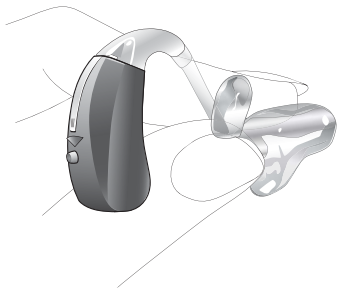
Wrong position ⑤



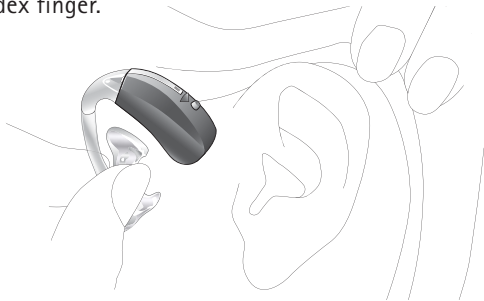
Moving the fins ⑥



Inserting your hearing instrument with earmold into your ear

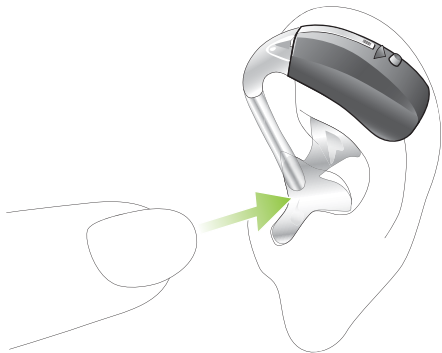


Using the hand on the same side you wear your hearing instrument, grasp the earmold between the thumb and index finger.

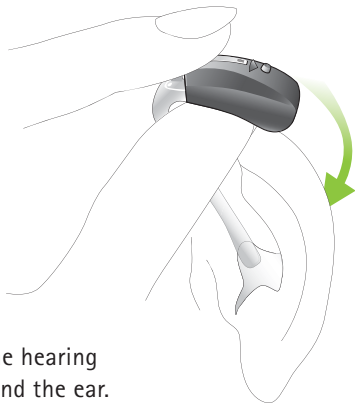


Raise your hand to your ear making sure the canal portion of the earmold faces your ear. Tilt your hand slightly forward.

Preparation



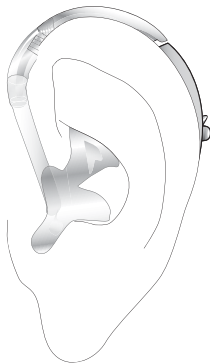
Place the canal portion of the earmold inside your ear canal. If it is difficult to get it into place, stretch your ear by pulling it gently backwards and upwards with your other hand. When the canal portion is in place, twist the earmold backwards so that it fits into the bowl part of your ear and the helix portion is under the fold.



Now position the hearing instrument behind the ear. Be careful not to twist the tubing.

Check the placement of the earmold by tracing the contour of the ear with your finger.

To remove your hearing instruments grasp the earmold, not the tubing, and pull it out of your ear gently but firmly.



Preparation

Fine tuning based on your personal preferences

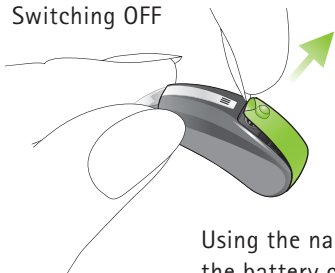
The fitting process has limited capabilities of reproducing the full spectrum of your personal sound environments. This limitation is overcome by the ability of your hearing system to learn from your real life volume adjustments. When used with a myPilot, Exélia Art offers a unique functionality called "Self Learning". In every environment, it logs your personal volume changes within the hearing system. This means that every time you change the volume of your hearing system, this correction is taken into account to apply your preferred volume automatically when you are in a similar environment next time.

Self Learning cleverly ensures that your volume corrections in each environment contribute to a fully personalized volume setting.

Operation

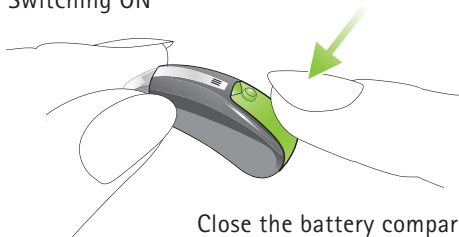
Switching ON/OFF

Switching OFF



Using the nail grip, slightly open the battery compartment until it snaps to its OFF position.

Switching ON



Close the battery compartment. Your hearing system is always in the default hearing program and at your preferred volume when turned ON.

Operation

Delayed activation



The Exélia Art hearing system requires several seconds to start up. Your hearing care professional may have activated a further delayed activation timer. This function delays the activation of the hearing system (for 9 or 15 seconds) after the battery door is closed in order to avoid any disturbance while placing it on your ear. An acoustic signal confirms when your hearing system is switched on.

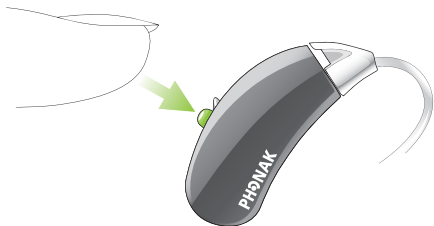
Hearing programs

Automatic mode

Exélia Art is able to recognize different hearing environments and to automatically select the most appropriate hearing program.

Additional program selection



Upon request, your hearing care professional can program for you additional individual hearing programs dedicated to specific hearing situations. Additional programs are accessed via the myPilot command center , the program switch  or other remote controls such as KeyPilot2 or WatchPilot2.



Program switch

The program switch allows manual toggling between the "Automatic Mode", the "Mute Mode" and individual hearing programs. A short melody confirms the selection of the "Automatic Mode".

Option without program switch

The Exélia Art micro hearing system is also available without the program switch. This could be an option for users who do not need an extra program switch  together with their myPilot command center  or their remote control.

Operation

Synchronized manual control



An automatic synchronisation for program selection, called QuickSync, is integrated in your hearing system. Users wearing two hearing instruments only have to activate the functionality on one instrument; the other one will be adjusted automatically.

ZoomControl

This special hearing program allows you to choose from four directions in which to focus your hearing system (front, back, left or right). ZoomControl can be accessed via the myPilot command center and/or the program switch on your hearing system.

Telecoil (optional)

Your hearing care professional may have activated a Telecoil in your hearing system. The programs with Telecoil can be used with hearing system compatible phones or via inductive loop systems (present in some school settings, theatres, churches etc.).

Ask your hearing care professional to print out the complete description of your individual hearing programs and how to access them with your myPilot command center , the program switch  or a remote control.

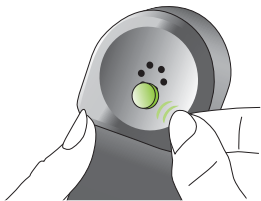
Operation

EasyPhone (optional)

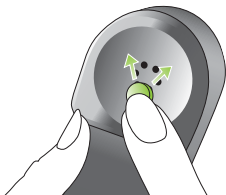
Your hearing care professional may have activated EasyPhone in your hearing system. The EasyPhone function enables your hearing system to automatically select your telephone program when the telephone handset is held close to your ear. An acoustic signal confirms the switch. It automatically returns to the previous hearing program when the telephone handset is removed from your ear.

Some telephones produce a magnetic field strong enough to activate your EasyPhone function. Most types of telephones require an additional magnet fixed on the receiver to activate this function.

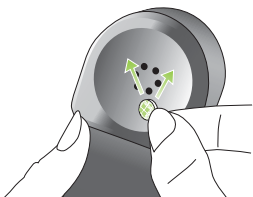
Fixing the EasyPhone magnet



Clean the telephone handset thoroughly. Hold the telephone handset nearly vertically, similar to making a telephone call. Hold the magnet near to the “listening end” of your telephone handset and release it. The magnet will automatically flip to the correct side.



If you hold the telephone receiver in your **right hand** when making telephone calls, position the magnet in the upper **right half** of the receiver.



If you hold the telephone receiver in your **left hand**, position the magnet in the upper **left half** of the receiver.

Use the double-sided adhesive tape to stick the magnet to the location described above. Do not cover the sound openings of your handset.






Instead of holding the phone against your ear canal, hold the earpiece of the phone against the microphone, which is at the front of your Exélia Art.

Operation

Use of EasyPhone

Use the telephone in a normal manner. An acoustic signal indicates the activation of the EasyPhone program. At the beginning, you may need to move the handset slightly to find the optimum position for a reliable switch and comfortable hearing.

If necessary, move the magnet to another position on the handset to increase your comfort of use.

-  Keep magnets out of reach of children and pets. If a magnet is swallowed, please seek the advice of a medical practitioner.
-  The magnet used to strengthen the magnetic field of your phone may affect some medical devices or electronic systems. Always keep the magnet (or the telephone equipped with the magnet) at least 30 cm (12") away from pacemakers, credit cards or other magnetically sensitive devices.
-  High distortion during dialing or phoning may mean that the phone receiver is stressed by the magnet. To avoid any damage, please move the magnet to another place on the telephone receiver.

Wireless accessories (optional)

myPilot

The myPilot command center is an optional accessory for your hearing systems. It allows a convenient, user-friendly and discreet control of all the functions of your hearing system and additional benefits.

- Volume control
- Program selection
- Automatic mode selection
- Access to ZoomControl program
- Clock and alarm
- myPilot battery status
- Read out of hearing instrument volume, programs and battery status

For detailed information on the use of your myPilot, please refer to its user guide or ask your hearing care professional.

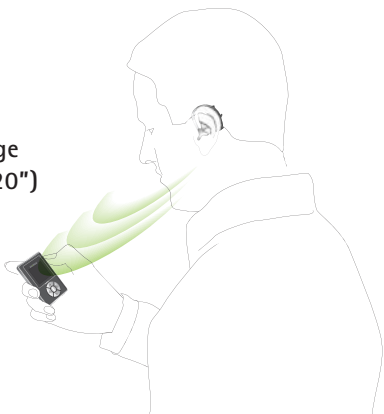
myPilot:
available in two stylish colors,
high-tech gray or white.




Wireless accessories (optional)

For optimum results, position your myPilot as shown in the drawing.

Operating range
max. 50 cm (20")



-  Do not use your myPilot in locations where it is forbidden to use electronic devices.

iCom

iCom is an optional accessory available for Exélia Art hearing systems. With the push of a single button, iCom connects your hearing system with the technology around you.



Bluetooth connections

iCom offers a simple way to connect your mobile phone via Bluetooth to your hearing system.

iCom is also capable of transmitting a stereo audio signal from any Bluetooth enabled device (built-in or via an adapter) such as MP3 players, laptops, computers or televisions.

Please refer to the iCom user guide for more information on the numerous iCom applications.



Do not use your iCom in locations where it is forbidden to use electronic devices.

Wireless accessories (optional)


FM compatibility

iCom also offers FM accessibility when a Phonak FM receiver is connected, refer to picture below.



EasyAudio and EasyBluetooth

Your hearing system contains two special audio programs: EasyAudio and EasyBluetooth. These programs are automatically selected in your hearing system when an audio or Bluetooth signal is received from iCom. EasyAudio and EasyBluetooth ensure that you have the optimum program activated for streaming. An acoustic signal in your hearing instruments confirms the switch to either Easy program.

-  Do not use your iCom in locations where it is forbidden to use electronic devices.

iView

iView, the status viewer, is an optional accessory for parents with small children and also for teachers or caregivers. Just by the press of a button, iView shows the status of the hearing instrument's battery, the current hearing program and volume settings, displayed on a large screen.

For detailed information on the use of iView, please refer to its user guide or ask your hearing care professional.



Do not use your iView in locations where it is forbidden to use electronic devices.

Remote control (optional)

Phonak offers a comprehensive range of modern remote controls. Ask your hearing care professional to demonstrate them to you. Choose the model that is most convenient for your lifestyle and your taste.

WatchPilot2

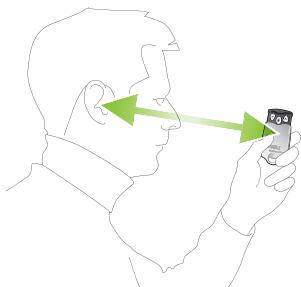
Exclusive and modern, available for women and men, with sporty rubber band or elegant metal band.



KeyPilot2


Small, easy and convenient.






For best results with your KeyPilot2 or WatchPilot2 remote control, refer to the drawing.

For detailed information on the use of your remote control, please refer to its user guide. Your hearing care professional can also print an individual description of your hearing programs for you.

 **Do not use your remote control in locations where it is forbidden to use electronic devices.**

FM communication (optional)

Your hearing system is equipped with Direct Audio Input (DAI). It allows you to fully benefit from the high-end FM systems from Phonak. 

When noise, distance or reverberation is a problem, FM systems greatly improve communication. A wireless FM communication system consists of a transmitter and a receiver. The transmitter is placed near, or directly connected to the sound source (e.g. TV or radio).

It transmits the signal via radio to the FM receivers attached either to your hearing instruments or to an iCom.

For more information on the use of your FM system, please refer to the appropriate FM transmitter or receiver user guide or ask your hearing care professional.

Dynamic FM transmitters

Phonak offers Dynamic FM transmitters for all customers and needs:



inspiro

The transmitter for teachers
and suitable for use in schools



SmartLink+

For teenagers and adults who want
nothing less than the very best



ZoomLink+

Comfortable transmitter
for everybody




EasyLink+

The transmitter that is easiest
to operate

FM communication (optional)

Multi-frequency FM receivers (see page 8)

Phonak recommends the following FM receiver with your Exélie Art hearing system.

MicroLink ML12i  : Perfectly integrated into the Exélie Art micro design for daily use. Switching ON/OFF on the hearing system can easily be done (see page 8).



MyLink

As an alternative to iCom with an FM receiver, MyLink is a small and appealing FM receiver that is compatible with hearing systems with a Telecoil.

MyLink picks up the FM signal and relays it to the hearing instrument.





FM communication (optional)

EasyFM

The EasyFM function automatically selects your FM program when an FM receiver is connected to your hearing system in automatic mode and an FM signal is detected. An acoustic signal confirms the switch. The hearing system switches back to the automatic mode when the FM signal is turned off.

You can always manually override the EasyFM function with the program switch or a remote control.

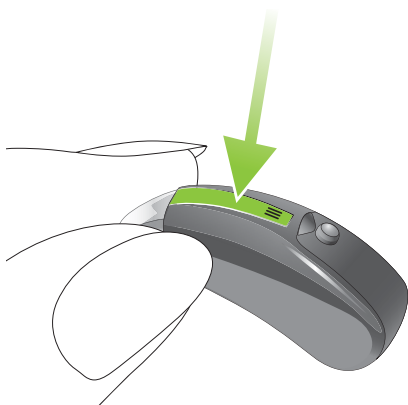
Manual selection of an FM program

- myPilot command center : choose your desired FM program. The selection is confirmed by an acoustic signal.
- Program switch : toggle until you reach the desired FM program, identified by the appropriate acoustic signal.
- Remote controls: KeyPilot2 or WatchPilot2 let you toggle through the desired manual programs as selected by your hearing care professional.

Maintenance

Microphone Protector

Important: The Microphone Protector is an exclusive Phonak system designed to protect the Exélia Art high-tech microphones from debris. As a result, they last much longer, reducing the service costs of your hearing system. The Microphone Protector can be replaced if needed. Your hearing system should never be used without the Microphone Protector.



Maintenance

Important: Consult your hearing care professional about changing the Microphone Protector if you experience any of the following:

- The hearing system sounds quieter than usual
- There is a reduction in sound quality
- Understanding in noise becomes more difficult
- It becomes more difficult to determine the direction of sounds

Your hearing care professional can tell you whether the Microphone Protector should be exchanged or not.

Micro tube and dome

The following care and maintenance instructions will help extend the life span and ensure the quality and comfort of your hearing instrument fit with the micro tube.

The micro tube feeds the amplified sound from the hearing instrument into the ear. It is important that the micro tube, the dome or SlimTip fit correctly into your ear. If the micro tube, the dome or SlimTip irritate your ear in any way and prevent you from wearing your hearing instrument, please contact your hearing care professional. You should never attempt to modify the shape of the micro tube yourself. The micro tube, the dome or SlimTip should be cleaned regularly.

Step 1

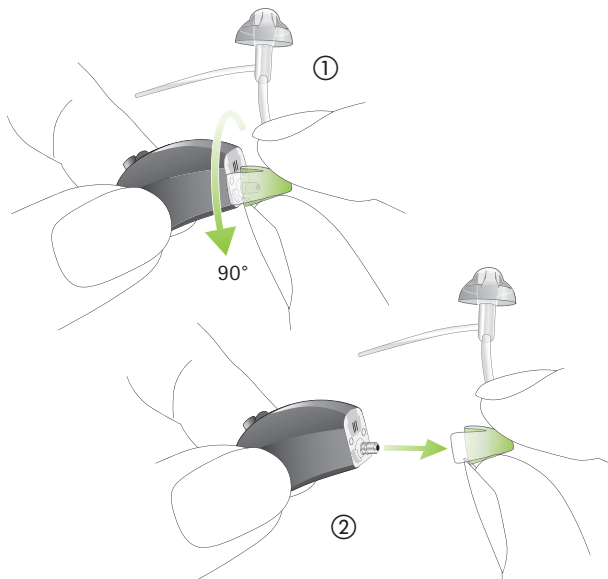
Hold the dome and remove the ear wax from the grid of the dome with a small brush or fabric.

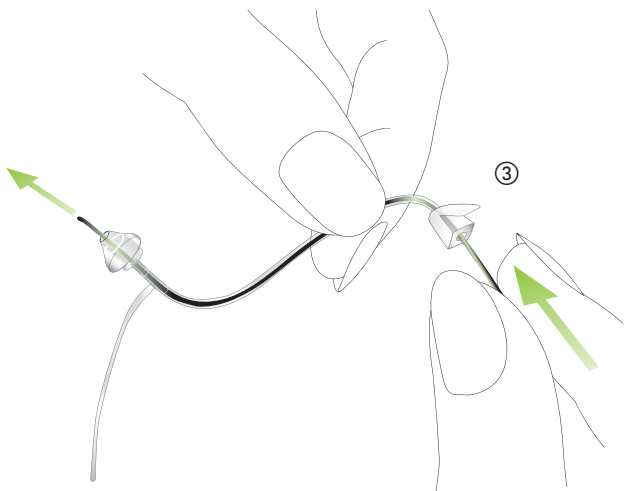
If hearing performance does not improve after step 1 proceed to step 2.

Step 2

Detach the micro tube from the hearing instrument as follows:

- Hold the micro tube in one hand and the hearing instrument in the other hand.
- Gently twist the micro tube 90° ① and pull it straight out, away from the hearing instrument ②.



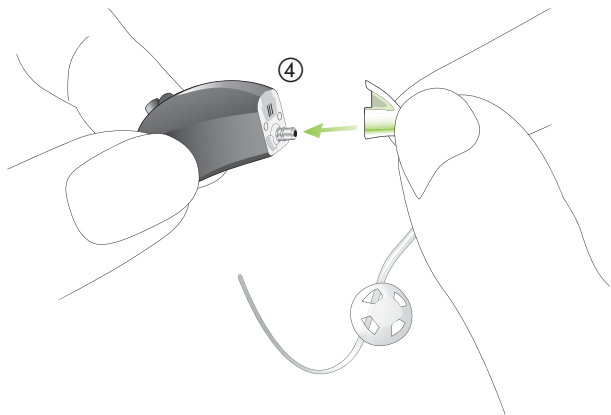




Insert the cleaning rod where the micro tube attaches to the hearing instrument and push it all the way through the micro tube and out through the dome or SlimTip ③. After cleaning it is important to remove the cleaning rod.

Maintenance

Attach the micro tube onto the hearing instrument as follows:

- Hold the micro tube in one hand and the hearing instrument in the other hand.
- Push the micro tube onto the hearing instrument until it is snug ④.



-  It is not recommended to submerge or rinse the micro tube, the dome or SlimTip in water, as there is a risk that a water drop may become lodged in the micro tube. As a consequence, sound will be prevented from going through the micro tube.
-  The micro tube and dome should be changed every three months or sooner if the micro tube becomes stiff or brittle. Only your hearing care professional should change the dome. This is to prevent the dome from detaching from the micro tube during insertion into the ear.

Important points

- 1) Always use new batteries for your Exélia Art hearing system. You can return empty batteries to your hearing care professional.
- 2) When your hearing system is not in use, leave the battery compartment open to allow any moisture to evaporate.
- 3) If you will not be using your hearing system for a long period of time, store it in its protective case. Remove the batteries and leave the battery compartments open. Make sure your hearing system is completely dry before closing the case.
- 4) Protect your hearing system from excessive moisture and heat. Always remove it before showering, bathing or swimming. Do not leave the hearing system near windows or in a car. Avoid strong jolts and vibration.

- 5) Daily cleaning and the use of a drying system is highly recommended. "C&C line" from Phonak is a complete set of cleansing products. Your hearing care professional will be glad to advise you. Never use household cleaning products (washing powder, soap, etc.) to clean your hearing system.
- 6) Hair spray, face creams and make-up can damage hearing systems. Remove the hearing system before applying cosmetics.
- 7) If you experience any soreness or inflammation in or behind your ear, contact your hearing care professional.
- 8) If your hearing system fails to operate after you have correctly inserted new batteries, contact your hearing care professional for advice. Please remember to bring your accessories (e.g. myPilot, iCom or remote control) together with your hearing system for service enquiries.






Maintenance



The symbol with the crossed out disposal bin indicates that this hearing system shall not be treated as household waste. Please hand over your old or unused hearing system to the applicable collection point for the recycling of electrical and electronic equipment or bring it to your hearing care professional for appropriate disposal.

By ensuring this product is disposed of correctly, you will help prevent potential negative effects on the environment and human health.

Warning

-  **Hearing system batteries are toxic when swallowed!** Keep them out of reach of children and pets. If batteries are swallowed, please seek the advice of a medical practitioner!
-  **Only use hearing systems that have been specially programmed for you by a hearing care professional.** Other instruments may be ineffective and may, in certain cases, even damage your hearing.
-  **X-ray radiation (e.g. CT scans, MRI scans) may adversely affect the correct functioning of your system.** We recommend that you remove them before undergoing X-ray procedures and keep them outside the room.
-  **Hearing systems in directional microphone mode reduce mainly background sounds.** Warning signals coming from behind and vehicles' horns approaching from behind are partially or completely suppressed.
-  **Changes or modifications made to this equipment not expressly approved by Phonak are not allowed.**

Service and Warranty

Phonak offers you a comprehensive global warranty which becomes effective on the date of purchase. Please ask your hearing care professional about the details and duration. This warranty covers any repairs due to defects in material and/or workmanship. The warranty does not cover damage from improper handling or care, exposure to chemicals, immersion in water or undue stress.

Damage caused by third parties or non-authorized service centers renders the Phonak warranty null and void. This warranty does not include any services performed by hearing care professionals in their offices. This warranty applies to the Phonak products listed below:

Serial number
instrument – right:

Serial number
instrument – left:

Date of purchase:

Date of purchase:

Notices

Notice 1

This instrument is certified under:



FCC ID: KWC-WHSBTE

IC: 2262A-WHS

This device complies with Part 15 of the FCC Rules and with RSS-210 of Industry Canada. Operation is subject to the following two conditions:

- 1) this device may not cause harmful interference, and
- 2) this device must accept any interference received, including interference that may cause undesired operation.

Changes or modifications made to this equipment not expressly approved by Phonak may void the FCC authorization to operate this equipment.

Notice 2

This Class B digital apparatus complies with Canadian ICES-003.

Notice 3

This equipment has been tested and found to comply with the limits for a Class B digital device, pursuant to Part 15 of the FCC Rules.

These limits are designed to provide reasonable protection against harmful interference in a residential installation. This equipment generates, uses, and can radiate radio frequency energy and, if not installed and used in accordance with the instructions, may cause harmful interference to radio communications. However, there is no guarantee that interference will not occur in a particular installation.

If this equipment does cause harmful interference to radio or television reception, which can be determined by turning the equipment off and on, the user is encouraged to try to correct the interference by one or more of the following measures:

- Reorient or relocate the receiving antenna
- Increase the separation between the equipment and receiver
- Connect the equipment into an outlet on a circuit different from that to which the receiver is connected
- Consult the dealer or an experienced radio/TV technician for help

Phonak distributors worldwide

Group companies:	(detailed information on www.phonak.com)
Australia	Phonak Australasia Pty. Ltd. Baulkham Hills N.S.W 2153
Austria	Hansaton Akustische Geräte GmbH 5020 Salzburg
Belgium	Ets Lapperre B.H.A.C. NV B-1702 Groot-Bijgaarden Phonak Belgium NV, B-1700 Dilbeek
Brazil	Phonak do Brasil – Sistemas Audiológicos Ltda. São Paulo – SP 04363-100
Canada	Phonak Canada Limited Mississauga, Ontario L5W 0B3
China	Phonak (Shanghai) Co. Ltd. Shanghai City 200233
Denmark	Phonak Danmark A/S Østre Hougvej 42-44, 5500 Middelfart
France	Phonak France SA, 69500 Bron
Germany	Phonak GmbH, 70736 Fellbach- Oeffingen, EC Representative
India	Phonak India Pvt. Ltd., 100 034 New Delhi
Italy	Phonak Italia S.r.l., 20159 Milano
Japan	Phonak Japan Co., Ltd., Tokyo 101-0044
Jordan	Phonak Middle East, 11181 Amman
Mexico	Phonak Mexicana, S.A. de C.V. 03920 México, D.F.MEXICO
Netherlands	Phonak B.V., 4131PN Vianen
New Zealand	Phonak New Zealand Ltd., Takapuna Auckland 9
Norway	Phonak AS, 0105 Oslo

Poland	Phonak Polska SP Z.0.0 00-567 Warszawa
Portugal	Phonak Ibérica S.A., 03008 Alicante, Spain
Russian Federation	Phonak CIS Ltd., Moscow, 115114
Spain	Phonak Ibérica S.A., 03008 Alicante
Sweden	Phonak AB, 117 43 Stockholm
Switzerland	Phonak AG, Phonak Schweiz, 8712 Stäfa
Turkey	Phonak Turkey A.S., 34357 Istanbul
United Kingdom	Phonak UK Limited Warrington, Cheshire WA1 1PP
USA	Phonak LLC, Warrenville, IL 60555-3927

Independent general distributors:

A complete list of Phonak distributors is available at Phonak's Internet site: www.phonak.com

Please visit us or ask your hearing care professional for information.

Manufacturer:

Phonak AG, Laubisrütistrasse 28
CH-8712 Stäfa, Switzerland



The CE symbol is a confirmation by Phonak AG that Exélia Art products and accessories meet the requirements of directive 93/42/EEC on medical devices and the R&TTE Directive 1999/5/EC on Radio and Telecommunication Terminal Equipment.

The numbers after the CE symbol are the numbers of consulted certified bodies under the above mentioned directives.



This symbol indicates that Exélia Art products comply with requirements for a BF type applied part according to EN 60601-1. The surface of the hearing system is specified as applied part type BF.



This symbol indicates that it is important that the user refers to associated warnings given in this user guide.

Safety notice

External devices may only be connected if they have been tested in accordance with corresponding IECXXXXX standards. Only use accessories approved by Phonak AG.

Operating conditions

The product has been designed for trouble-free operation without restrictions when used as intended, unless otherwise stated in this user guide.

Transportation and storage conditions

Temperature should not exceed limits of $-20^{\circ}/60^{\circ}$ Celsius at a relative air humidity of 65% for extended periods during transportation and storage. Air pressure between 500 and 1100 hPa is not detrimental to the instrument.

 **Z999** Australia & New Zealand

 **ARATSL** Brazil

CMII ID: China

 **R** Japan

 **KCC** South Korea



www.phonak.com

029-0218-02/M1.00/2009-03/A+W Printed in Switzerland, © Phonak AG, all rights reserved

