

Phonak Wireless Communication Portfolio

Product information



We have been listening to ensure we fully understand what matters to you. Each new generation of products is based on these insights. This understanding inspired a range of accessories that capture the voices your clients want and need to understand. The accessories in our Wireless Communication Portfolio are easy to demonstrate – a great way of proving the benefits to your clients. They offer unparalleled speech understanding in noise and over distance, watching TV and listening to music become more pleasurable, and handsfree phone use is a delight. We've removed the barriers to successfully fitting wireless accessories and are happy to present our enhanced range of highly effective communication devices – the Phonak Wireless Communication Portfolio.

Roger Pen

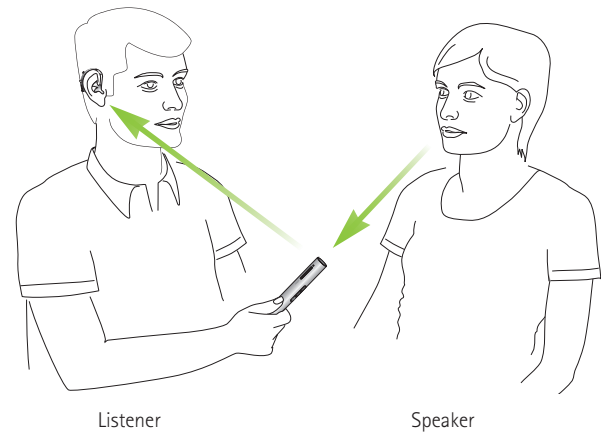
Our universal, cutting-edge wireless microphone combined with a Roger receiver(s) helps people with hearing loss to understand speech even in loud noise and over distance. Designed with discretion and style in mind, the Roger Pen features adaptive wireless transmission, fully automated settings, wideband audio Bluetooth for cell phone use, TV connectivity and an audio input for listening to multimedia. It can also be used alongside other Roger Pens and Roger Clip-On Mics in a microphone network. The Roger Pen can be put on a table, held in the hand or clipped onto the speaker's clothing. Roger receiver options include Roger X which can be combined with ComPilot, Roger MyLink and design-integrated receivers for use with Phonak hearing instruments and select cochlear implants.



Feature overview

- Proven Roger speech-in-noise performance
- Fully automatic microphone mode selection
- Manual microphone mode option
- Available colors: Sterling Silver, Petrol or Ruby
- 'Zoom into' soft voices in quiet and over distance
- Audio input for connection to multimedia devices
- Bluetooth version 4.0 for cell phone connection
- Multiple microphone use in a network
- Operating time: 7 hours
- Operating time with an active Bluetooth call: 5 hours
- Operating range: 33 feet (typical)
66 feet (ideal conditions)

How to use



Roger Clip-On Mic

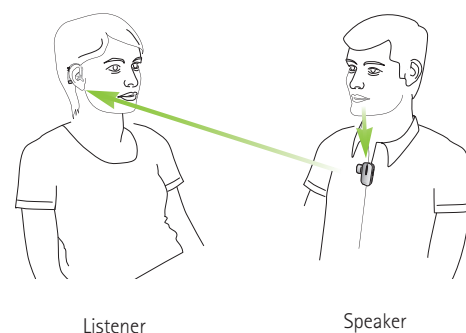
This compact microphone combined with a Roger receiver(s) uses adaptive wireless transmission to help people with hearing loss understand speech in noise and over distance. It is ideal for use by a single conversation partner, plus it includes an audio input for listening to multimedia and TV connectivity. It can also be used alongside other Roger Clip-On Mics and Roger Pens in a microphone network. Roger receiver options include Roger X which can be combined with ComPilot, Roger MyLink and design-integrated receivers for use with Phonak hearing instruments and select cochlear implants.



Feature overview

- Proven Roger speech-in-noise performance
- Advanced microphone beamforming
- Audio input for connection to multimedia devices
- Multiple microphone use in a network
- Operating time: 6 hours
- Operating range: 33 feet (typical)
66 feet (ideal conditions)

How to use



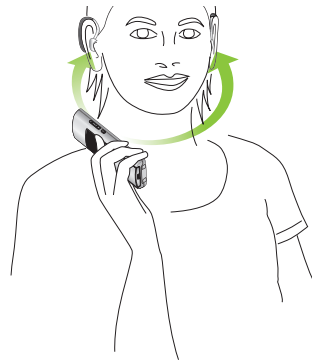
Phonak DECT home phone

This advanced cordless home phone is easy to use and includes essential features designed specifically for people with hearing loss. The main benefit of the Phonak DECT home phone is the simultaneous sound transmission to both hearing instruments, maximizing speech intelligibility.

Feature overview

- Compatible with all Phonak wireless hearing instruments
- Unpack and use: no fitting required
- Simultaneous audio transmission to both hearing instruments
- 1-click volume boost (up to +15 dB)
- Volume control buttons
- Speakerphone
- Base to handset range up to 950 feet
- Also suitable for those without hearing loss
- Direct dial button for urgent number
- Voicemail

How to use



Phonak PilotOne

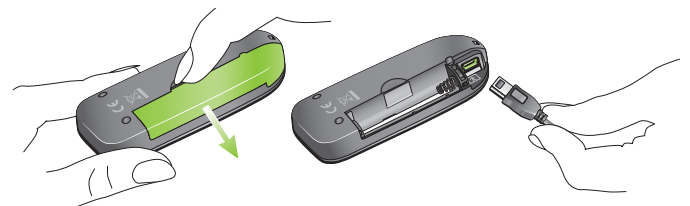
The elegant PilotOne was designed for effortless hearing instrument remote control and usability. It fully supports FlexControl/Volume settings of the hearing instruments. Setting up the remote control to work with your clients' wireless and non-wireless hearing aids is simple and easy.



Feature overview

- Compatible with all Phonak wireless hearing instruments, including Petite devices
- Remote access to FlexControl/Volume
- Quick and easy setup with Phonak Target™ fitting software
- Easy volume and program selection
- Home button for perfect orientation
- LED indicator for visual confirmation during operation
- Key lock function
- Standard alkaline battery (1x AAA)
- Eyelet for keyring lanyard

Grouping



Connect the device to the fitting computer using a mini USB plug. Remove the battery before connecting the mini USB cable.

Phonak ComPilot

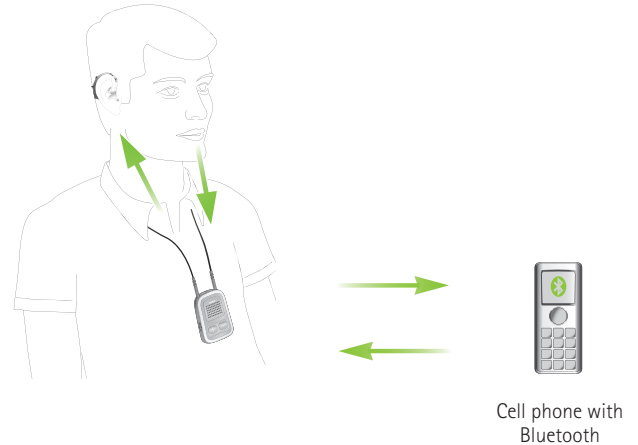
The multi-functional ComPilot connects wirelessly to all Phonak wireless hearing instruments and has an integrated remote control which also works without the neckloop. With VoiceAlerts, clients will receive spoken messages from the ComPilot, for example telephone caller identification. Together with the TVLink S and RemoteMic, ComPilot turns a myriad of communication challenges into sheer listening delight for your clients.



Feature overview

- Best voice quality transmission for phone calls
- Bluetooth 2.1+EDR standard
- Built-in remote control for Phonak wireless hearing instruments (Quest and Spice+ generations)
- Wireless binaural streaming of audio signals in stereo quality
- VoiceAlerts for easy interaction with hearing instruments
- More than 8 hours of continuous streaming time on a single charge
- Directional microphones with speech enhancer
- 3.5 mm stereo plug, Europlug
- Exchangeable neckloop, 2 lengths: 30 inches and 24 inches

How to use



Phonak RemoteMic

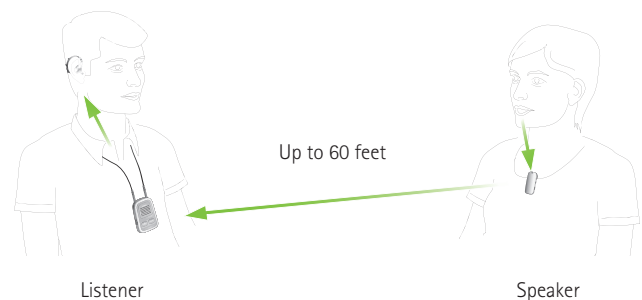
The wireless microphone, RemoteMic, is an easy solution for one-on-one conversations in moderate noise and over distance. The RemoteMic is clipped onto the speaker's clothing. Combined with the ComPilot, it transmits the speaker's voice directly to the hearing instruments over a distance of up to 60 feet. The hearing instrument microphones will be automatically attenuated while the RemoteMic signal is being received.



Feature overview

- Omnidirectional microphone
- Volume control
- Rechargeable
- Easy to operate clip
- Bluetooth 2.1+EDR standard
- Up to 8 hours usage time per charge
- Up to 60 feet operating range
- Easy setup and usage
- Complete with securing cord and protection pouch

How to use



Phonak TVLink S

The Phonak TVLink S basestation, used with ComPilot, turns any Phonak wireless hearing instrument into a lightweight wireless headset with a range of up to 100 feet. It provides stereo sound quality and is installed in just 60 seconds.



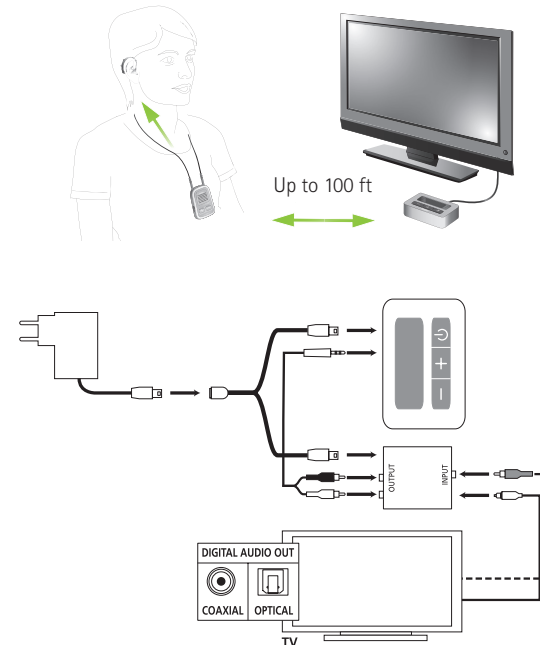
Feature overview

- Test mode for a quick audio check
- Complete set including power plug and cables
- Quick and easy installation
- Bluetooth 2.1+EDR standard
- Charging slot for ComPilot
- Large buttons for easy operation
- Up to 100 feet transmission range
- Digital volume adjustment with audio-visual feedback
- Visual feedback if no audio input is present

Note:

If the TV system does not offer analog audio signal outputs, a digital-to-analog converter [076-0011] is needed to connect the TVLink S basestation to the TV. The picture shows how to connect the D/A converter.

How to use



Pairing Instructions

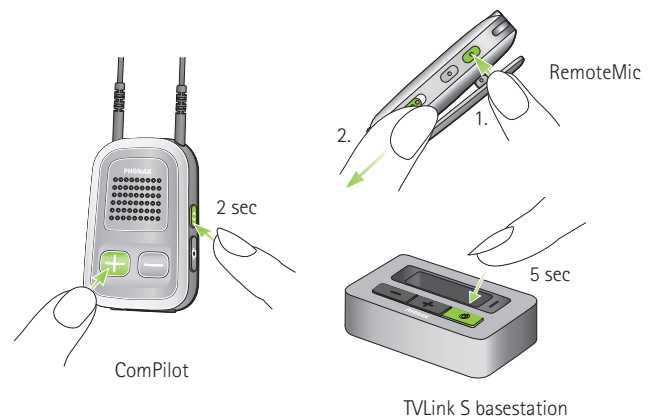
If you ordered the ComPilot with the RemoteMic or the TVLink S basestation as a bundle, both items are already paired with one another. If the RemoteMic or the TVLink S comes separate from the ComPilot, they need to be manually paired together before they are ready for use.

Placing devices into pairing mode:

ComPilot: Press and hold the '<>' and '+' buttons simultaneously for 2 seconds

RemoteMic: Press and hold the '+' button (1.) while switching ON (2.)

TVLink S: press the ON/OFF button for 5 seconds



Grouping, fitting and programming summary



Grouping required
Configurable in the fitting software
Adjustable streaming programs
Customized instructions

Phonak ComPilot	Phonak PilotOne
Yes for remote control	Yes
Yes	Yes
Mobile phone, Bluetooth audio, Audio jack, RemoteMic/Roger/FM	-
Yes	Yes

Phonak Target™ fitting software identifies ComPilot and PilotOne automatically the moment they are connected to the fitting computer via a mini USB cable. If desired, all accessories can be manually identified or selected in the **[Instruments]** > **[Accessories]** screen.

For best results, it is possible to fine-tune the precalculated automatic streaming programs. To configure the accessories, go to the **[Fitting]** > **[Device options]** screen.

Solution guide



	Microphone	Streaming	Phone calls
	Loud noise; one or more conversation partners	TV ¹ (audio output devices)	Home
	One-to-one conversation; moderate noise	PC ² /Laptop/Portable music player	Cell phone, IP telephony ²
	Single speaker over distance		
	Multiple speakers over distance		

Phonak ComPilot	Phonak TVLink S with ComPilot	Phonak RemoteMic with ComPilot
		•
		•
	•	
•	•	•
•	•	•

¹ DA converter required if no analog audio output is available
² BTDS500 USB audio adapter [076-0856] recommended





Phonak TVLink S / RemoteMic

Bluetooth pairing to ComPilot
 Optional
 Bluetooth audio, RemoteMic/Roger/FM

Yes



Roger Pen

Yes *
 No configuration required
 Fully automatic

-



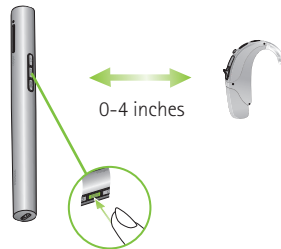
Roger Clip-On Mic

Yes *
 No configuration required
 Fully automatic

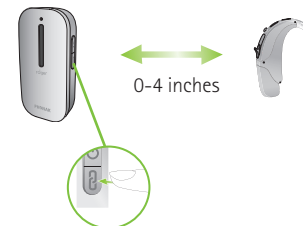
-

*Connecting to your Roger receivers:

Roger Pen



Roger Clip-On Mic



**Roger Pen,
2 integrated receivers**

-
-
-
-
-
-
-



**Roger Pen,
Roger X,
ComPilot**

-
-
-
-
-
-
-



**Roger Clip-On Mic,
2 integrated receivers**

-
-
-
-
-
-
-



**Roger Clip-On Mic,
Roger X,
ComPilot**

-
-
-
-
-
-
-



**Phonak DECT
home phone**

-

Life is on

We are sensitive to the needs of everyone who depends on our knowledge, ideas and care. And by creatively challenging the limits of technology, we develop innovations that help people hear, understand and experience more of life's rich soundscapes.

Interact freely. Communicate with confidence.
Live without limit. Life is on.

www.phonakpro-us.com