

# Roger Clip-On Mic

Quick setup guide / Schnellstartanleitung

Guide d'installation rapide / Guía rápida de instalación



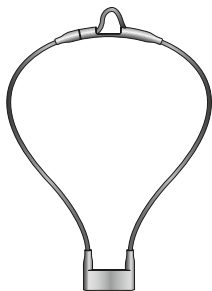
roger



**PHONAK**  
life is on

Components  
Komponenten  
Composants  
Componentes

Roger Clip-On Mic



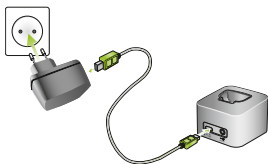
Setting up the docking station

Docking Station einrichten

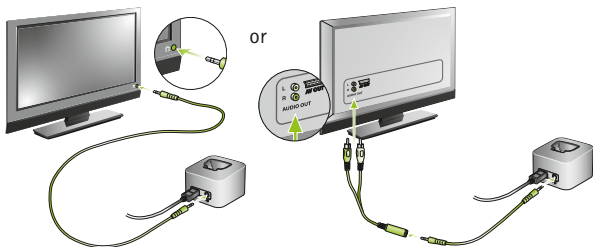
Mise en place de la station d'accueil

Configuración de la base de conexión

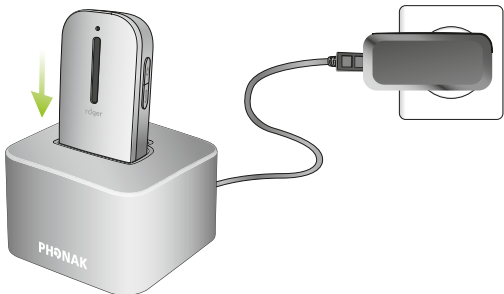
A



B



Charging Roger Clip-On Mic  
Roger Clip-On Mic aufladen  
Charger Roger Clip-On Mic  
Cargar el Roger Clip-On Mic

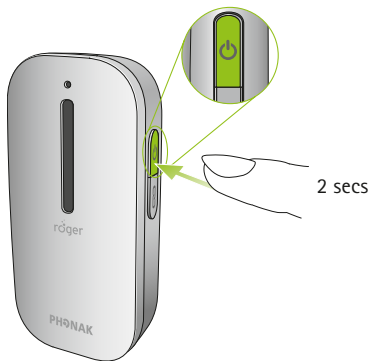


Switching on Roger Clip-On Mic

Roger Clip-On Mic einschalten

Mettre en marche Roger Clip-On Mic

Encender el Roger Clip-On Mic



Connecting to your Roger receiver  
 Verbinden mit Ihren Roger-Empfängern  
 Connecter à votre récepteur Roger  
 Conectar su receptor Roger



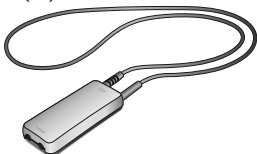
Up to two Roger ear-level receivers (A) or one Roger MyLink (B)  
 Bis zu zwei Roger-Empfänger (A) oder ein Roger MyLink (B)  
 Jusqu'à deux récepteurs Roger au niveau de l'oreille (A) ou un Roger MyLink (B)  
 Hasta dos receptor Roger de oído (A) o un Roger MyLink (B)

A (2x)

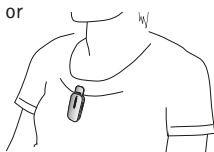
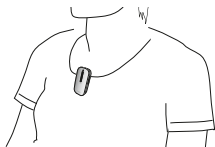


or

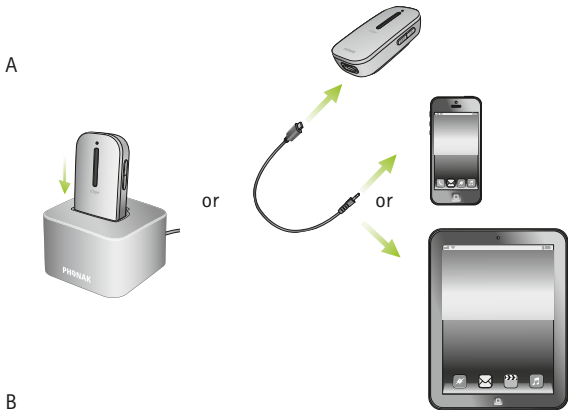
B (1x)



Wearing Roger Clip-On Mic  
Roger Clip-On Mic tragen  
Porter Roger Clip-On Mic  
Llevar Roger Clip-On Mic



Listening to a multimedia device  
Verbinden mit einem Multimediagerät  
Connection à un appareil multimédia  
Conexión a un dispositivo multimedia



Switch your multimedia device on and press play/start  
Schalten Sie nun Ihr Multimediagerät ein und spielen Sie das Audiosignal ab  
Mettez en marche votre appareil multimédia et pressez play/start  
Encienda el dispositivo multimedia y pulse play/start





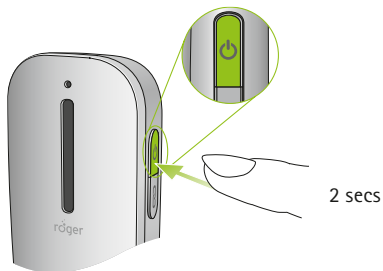


Switching off Roger Clip-On Mic

Roger Clip-On Mic ausschalten

Eteindre Roger Clip-On Mic

Apagar Roger Clip-On Mic





The Roger Clip-On Mic User Guide provides more detailed usage information.

Die Roger Clip-On Mic Gebrauchsanweisung informiert detailliert über die Anwendungsmöglichkeiten.

Le mode d'emploi Roger Clip-On Mic vous donnera des informations détaillées sur l'utilisation.

Las instrucciones de uso del Roger Clip-On Mic le darán una información más detallada sobre su uso.



Indicator light (LED status)


Optische Anzeige (LED-Status)


Témoin lumineux (LED status)

Indicador de luminoso (LED status)

 Mute mode / Stumm / Mode sourdine / Mode silenciosa

 Charging / Aufladen / Chargement / Cargar


 Fully charged / Voll geladen / Complètement chargé / Completamente cargado

 No connection to primary microphone  
Switch on your primary microphone

Keine Verbindung zum Hauptmikrofon  
Schalten Sie das Hauptmikrofon ein

Pas de connexion au microphone principal  
Allumez votre microphone principal

No hay conexión con el micrófono principal  
Encienda su micrófono principal

 Low battery. Charge Roger Clip-On Mic  
Niedriger Batteriestand. Laden Sie das Roger Clip-On Mic  
Accumulateur faible. Chargez Roger Clip-On Mic  
Pila baja. Cargue Roger Clip-On Mic

**Manufacturer:**

Phonak Communications AG

Laenggasse 17

CH-3280 Murten

Switzerland

[www.phonak.com/phonak-roger](http://www.phonak.com/phonak-roger)

