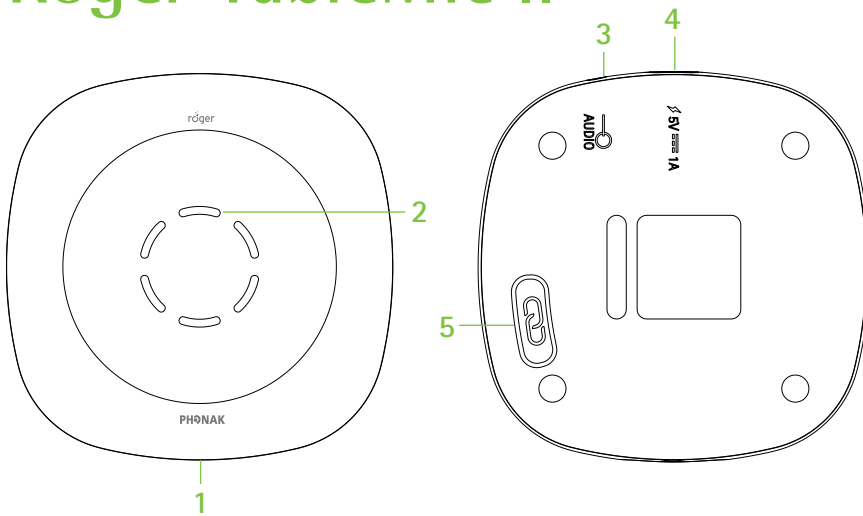


How to Connect with Roger TableMic II

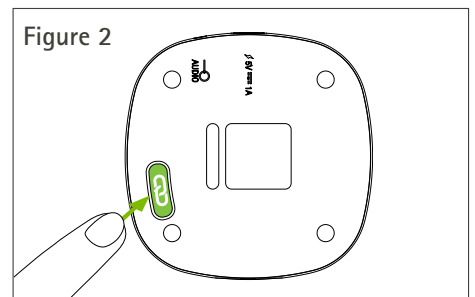
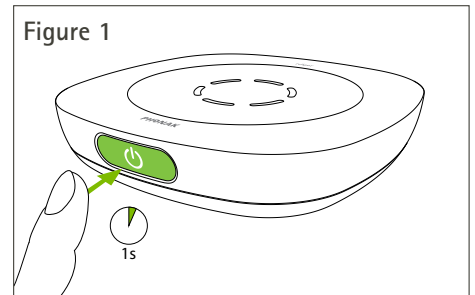


Device Description

1. On/Off/ Mute
2. Microphones and indicator light
3. Audio input
4. Charging input
5. Connect

General Operation

- **To switch on**, press the On/Off button on the side of the Roger TableMic II until the indicator light turns green. **Figure 1**
- **To connect**, hold your Roger TableMic II close (within 10 cm/4 inches) from the Roger receiver.
- Press the connect button on your Roger TableMic II. **Figure 2**
- **To switch off**, press the On/Off button on the side of the Roger TableMic II for 3 seconds.
- **When charging** with the supplied USB power cord, the indicator lights will flash green. When fully charged you will see a solid green light.



Connecting to Computers/Tablets

1. Make sure you have switched on your Roger TableMic II.
2. Connect one end of the supplied audio cable into the aux-input of your TableMic II.
3. Connect the other end to the audio output of your computer or other audio source. **Figure 3**
4. Select "Headphones" from the pop up menu on your computer. **Figure 4**
5. Control volume by clicking on speaker icon on the bottom right corner of your computer screen. **Figure 5**

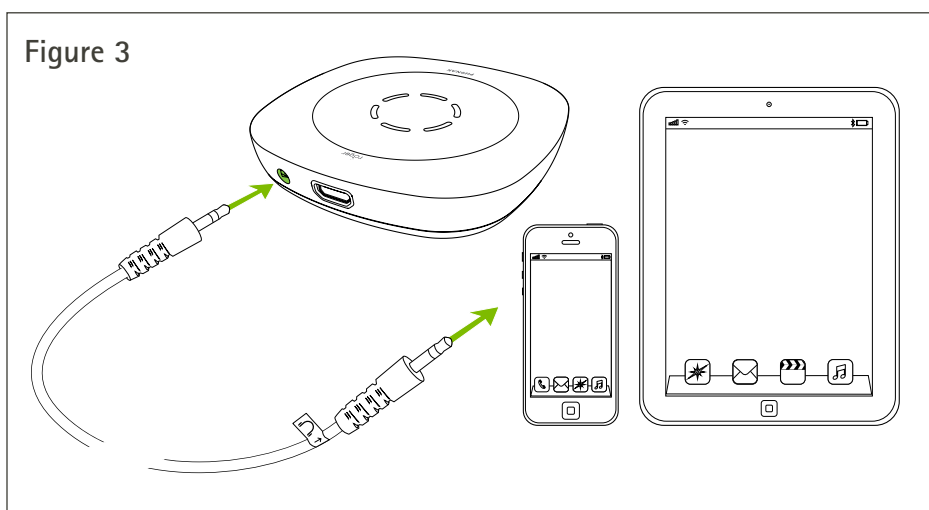


Figure 4

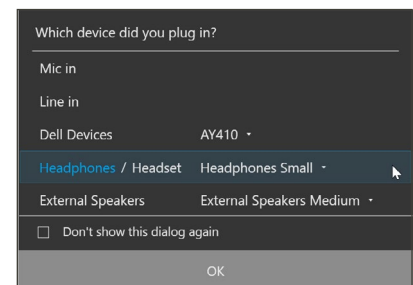


Figure 5

