

An examination of clinical uptake factors for remote hearing aid support: Concept mapping study with audiologists*

The **emergence of remote hearing healthcare** has been seen as largely beneficial. Nevertheless, there are **areas where practicing audiologists have concerns** about utilizing remote care.



Objective

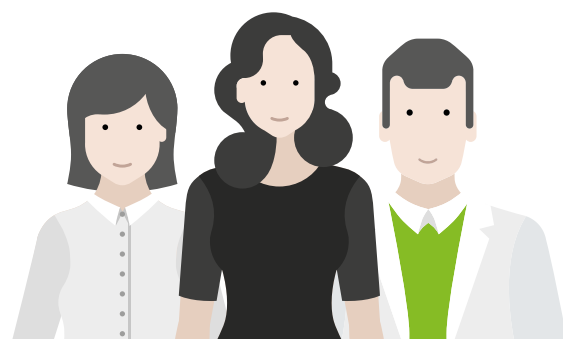


Discover and create a **“conceptual framework”** regarding areas of concern limiting the adoption of audiological remote care.

Methodology

42 audiologists from Ontario, Canada recruited from professional associations

- Grouped by adult and pediatric focus
- Web-based tasks
- Concept mapping
- Multidimensional scaling
- Brainstorming sessions
- Hierarchical cluster analysis



Key findings

- ▶ 6 areas of “uptake influence” emerged from analysis (listed in order of greatest to least importance to the overall group)
- ▶ Differences in the importance of each area between adult and pediatric audiologists

Results

#1 concern area for both groups

1) Technology / Infrastructure



4) Client-centered considerations



2) Audiologist-centered considerations



5) Clinical implications



3) Hearing healthcare regulations



6) Financial considerations



● Adult audiologists

● Pediatric audiologists

Considerations

Considerations for practice

As remote audiological healthcare evolves, **realizing the overall concerns and challenges** clinical audiologists (with varying specialties) have in this area, **can greatly assist us in how we prepare and implement quality remote hearing health care in the future.**



*Glista, D., O'Hagan, R., Moodie, S., Et Scolie, S. (2020): An examination of clinical uptake factors for remote hearing aid support: a concept mapping study with audiologists, *International Journal of Audiology*, DOI: 10.1080/14992027.2020.1795281