



## Röger™ at work

Focus on work rather than on hearing



## Communicate, participate and contribute

The modern workplace can be a challenging listening environment. It is also a place where successful communication is key in order to succeed.

When affected by hearing loss, you become a master of finding ways around difficult hearing situations. This can be time consuming, emotionally demanding and often limits your ability to fully participate and engage.

Many people are not aware that there are wireless microphones dedicated for work life that can be used together with modern hearing aids. A solution that boost performance and make it easier for you to both participate and contribute at work.



# Roger

## Bridging the understanding gap

Modern hearing aids do a great job and support us in many everyday situations. However, in situations where several people are involved, when background noises are frequent or when the sound source is at a distance, like in meetings, a hearing aid might not be sufficient.

### Introducing Roger

Even the most powerful hearing aids have limitations. When faced with certain challenging listening situations, we need to consider additional solutions.

This is where the Roger portfolio of wireless solutions excels. It consists of discreet wireless microphones and tiny Roger receivers that simply click

onto your existing hearing aids or implants. Then you can clearly hear the speaker's words directly in your ears, without any distracting background noise.

Meetings and conferences become a pleasure, allowing you to effortlessly focus on work rather than on hearing.





## Roger Table Mic for meetings

Roger Table Mic is a wireless microphone especially designed for meetings. Meetings often cause hearing difficulties for people with a hearing loss. The difficulties are due to side conversations, surrounding noise or the distance between you and someone at the other end of the table.

In these situations one or more Roger Table Mics are ideal to use. The discreet design makes them blend in perfectly with the rest of your meeting equipment. Simply place them on the meeting table. The spoken words of the meeting participants are distinguished and the background noise is reduced. Speech is clearly and wirelessly transmitted to your receivers.



# Roger Table Mic

## Plenty of benefits, no effort

### Easy-to-use

Roger Table Mic is very easy to use. Connecting the receiver to the microphone is done by the simple push of a button. Just put the microphone on the table. No need to explain to everybody how it works.

### Hassle-free

Roger Table Mic and other Roger microphones are fully automatic. They adjust their settings to the surrounding noise levels. No programming software is required. With a battery capacity of more than 20 hours you never have to worry about the operating time.

### Highly discreet

All Roger devices are small, light-weight and designed with discretion in mind. Simply attach a design-integrated receiver to your Phonak hearing aid. For extra discreet usage you can choose to operate the table microphone with a remote control.

### Multi-functionality

You can connect several Roger microphones to your existing hearing devices at the same time in a Multi-Talker Network. That means it is possible to participate in really large meetings. With a superior range of more than 20 meters, you don't miss a thing.





## Other solutions for your needs at work

Today work doesn't necessarily take place at one physical location. Work is about mobility and collaboration. To meet this reality we have created receivers and microphones which are simple to use and compatible with each other. This makes it easy for you to choose the products that best meet your specific needs.



---

### Roger Pen

Roger Pen is a versatile and stylish wireless microphone that allows you to understand in noise and over distance. It reduces background noise and keeps you connected in one-on-one or group conversations. It features Bluetooth™ for easy cell phone calls.



---

### Roger Clip-On Mic

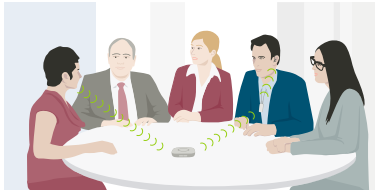
Roger Clip-On Mic is a discreet wireless microphone that your conversation partner wears on a shirt, blouse or jacket. The Clip-On Mic is suitable for meetings with one or several presenters. It automatically connects to and functions with other Roger products.



# When to use Roger

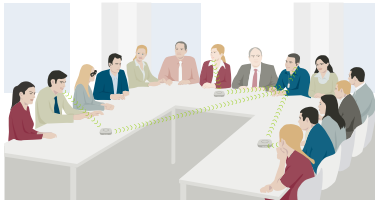
Regardless of the situation, Roger microphones are always easy to use and enable you to fully participate and contribute with your colleagues.

## Small meetings



Meetings with four or five participants become overwhelming for people wearing hearing aids. Simply place one table microphone on the meeting table and you will hear your colleagues better.

## Large meetings



If you are participating in a large meeting you might need more than one Roger Table Mic. You can use as many table microphones as necessary, because they form a system and transmit speech to your hearing aids from wherever the conversation takes place.

## Meetings with presenters



Presenters often stand at a distance from the meeting table and the table microphone. When the presenter wears Roger Clip-On Mic or Roger Pen, these microphones work smoothly together with the table microphone. This allows you to hear the speech clearly from both the presenter and the meeting participants.

## One-on-one conversation in noise



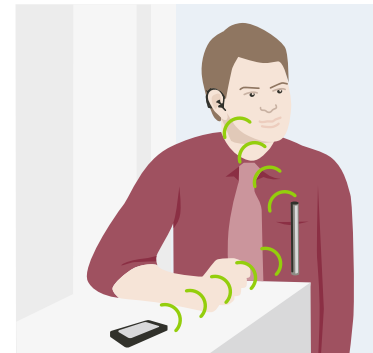
When surrounded by distracting noise, the most effective approach is to hang Roger Pen around your colleague's neck or clip on Roger Clip-On Mic on their collar.

## PC and multimedia



Technologies like video conferencing systems and Internet calls are frequently used at work. Roger microphones make hearing their audio easy; simply connect your Roger microphone, using the audio cable provided, to bring these essential sounds directly to your ears.

## Cell phone calls



Making phone calls is a real challenge for people affected by hearing loss. Roger Pen includes the very latest Bluetooth technology, allowing you to connect and hear cell phone calls directly through your hearing aids or CI.

# Situations and recommendations

Learn which Roger microphone best suits each different listening situation.

Situation	1 Roger Table Mic	Multiple Roger Table Mics	Roger Pen	Roger Clip-On Mic
Several speakers in noise and over distance* – Meetings with up to four participants – Meetings with four to six participants – Meetings with more than six participants – Conferences – Presentations	● ● ● ● ●	● ● ●	● ● ● ● ●	●
A single presenter talking over distance			●	●
A single speaker in noise and over distance – Conversation with a colleague in a car – Conversation with a colleague in a cafeteria – Conversation with a colleague in a hallway	●		● ● ●	● ● ●
Listening to multimedia – Audio, PC, video conferences	●		●	●
Cell phone calls via Bluetooth			●	

**Take the next step**  
To find out which Roger system is best for you, talk to your hearing care professional or read more at [www.phonak.com](http://www.phonak.com)

# Roger receivers

With three types of receivers that function perfectly with hearing aids or implants, there is a Roger receiver available for everyone.



Roger design-integrated

These receivers are designed to click onto Phonak hearing aids. They are also available for selected cochlear implants from Advanced Bionics and Cochlear.



Roger X

This miniature universal Roger receiver is compatible with virtually every behind-the-ear hearing aid, implants and streamers.



Roger MyLink

Neck loop receiver with volume control. It works with any hearing aid or implant that features a telecoil.



## How our Roger products work

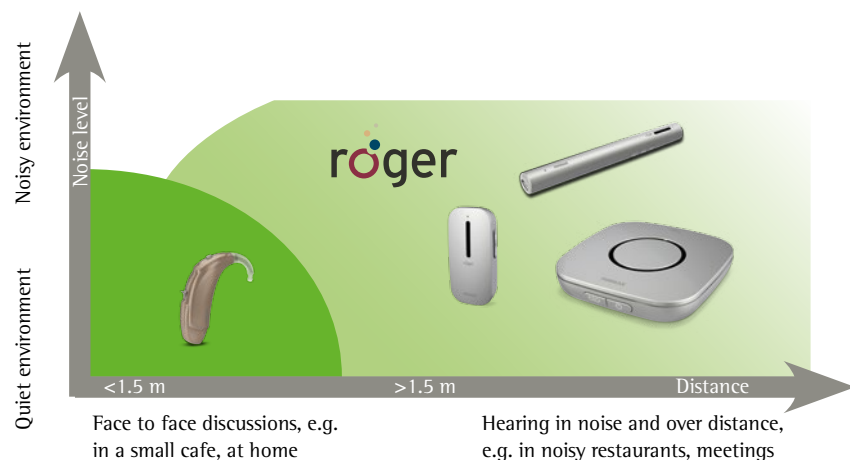
At distance and in noise, hearing aids are often not enough. This means that they work perfectly for a near field conversation at an arm's length in quiet surroundings. Nevertheless you may experience communication challenges in loud noise and over distance. Our Roger standard is designed to boost speech understanding in challenging listening situations more effectively than any other technology.

Roger is an adaptive digital wireless transmission standard running on the 2.4 GHz band. It wirelessly transmits the speaker's voice directly to the user's hearing aids. It is based on a proprietary microchip and makes use of intelligent and adaptive algorithms to improve the signal-to-noise ratio to levels never seen before.

Signal-to-noise ratio (SNR) is the ratio between the signal (speech)

and the background noise (ventilation rune, echo, other voices etc.). The stronger the signal in relation to the background noise, the higher the speech quality.

Our research and development team has focused on getting the best SNR. Therefore our Roger products have the most advanced technology currently on the market to transmit the spoken words and less of the background noise.





## Get connected!

Roger hearing solutions enable you to effortlessly participate and contribute with your colleagues in a work environment. You don't have to compromise because Roger makes certain that you hear everything in high quality sound. Roger allows you to focus on business matters and perform without distraction.

### Reimbursement

Hearing solutions needed for work are often, partly or fully, reimbursed. Hearing care professionals offering the Roger portfolio can help you apply for reimbursement and support you in the application process.

Learn more about which Roger solution meets your needs. Talk to your hearing care professional or read more at [www.phonak.com](http://www.phonak.com).



---

## Life is on

We are sensitive to the needs of everyone who depends on our knowledge, ideas and care. And by creatively challenging the limits of technology, we develop innovations that help people hear, understand and experience more of life's rich soundscapes.

Interact freely. Communicate with confidence.  
Live without limit. Life is on.

[www.phonak.com](http://www.phonak.com)

