

Roger™ Multimedia Hub

Quick setup guide | Schnellstartanleitung
Guide d'installation rapide | Guía rápida de instalación

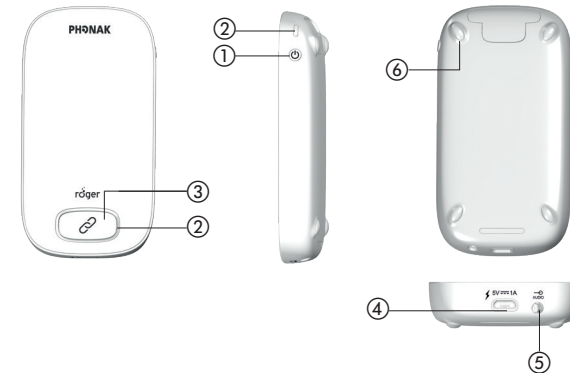


roger

PHONAK
life is on

Start

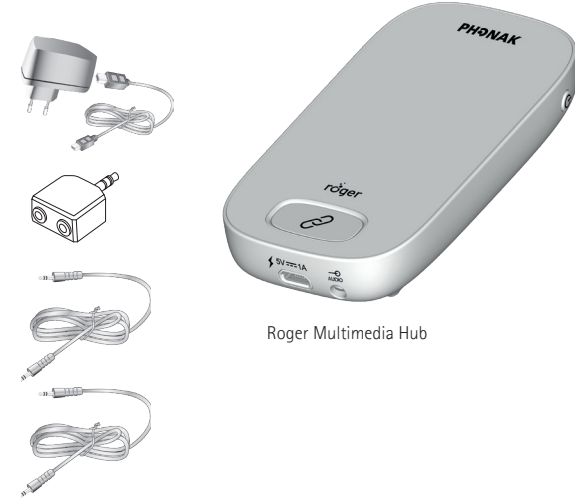
Device description
Produktbeschreibung
Description de l'appareil
Descripción del dispositivo



- ① On/Off
- ② Indicator light
Statusanzeige
Témoin lumineux
Indicador luminoso
- ③ **Connect**
Button
Taste
Bouton
Botón
- ④ micro-USB
- ⑤ Jack 3.5 mm / 1/8"
- ⑥ Feet
Füße
Pieds
Pies

Start

Components
Komponenten
Composants
Componentes

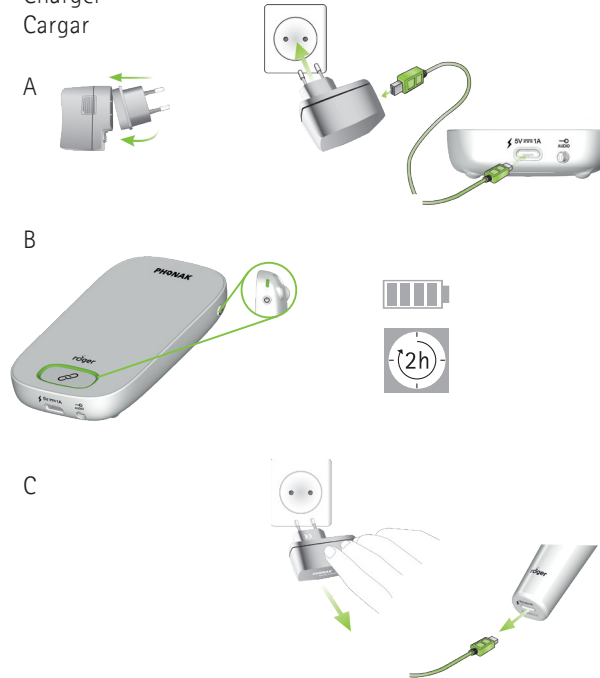


Roger Multimedia Hub

Package contents may vary slightly depending on country.
Der Lieferumfang kann je nach Land variieren.
Le contenu peut varier selon les pays.
El contenido puede variar dependiendo del país.

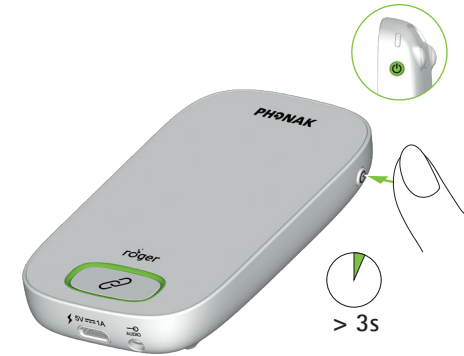
1

Charging
Aufladen
Charger
Cargar



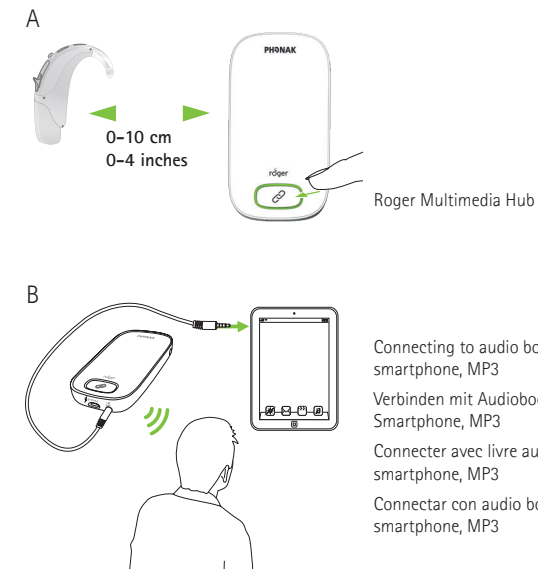
2

Switching On/Off
Ein-/Auschalten
Mise en marche/éteindre
Encender/apagar



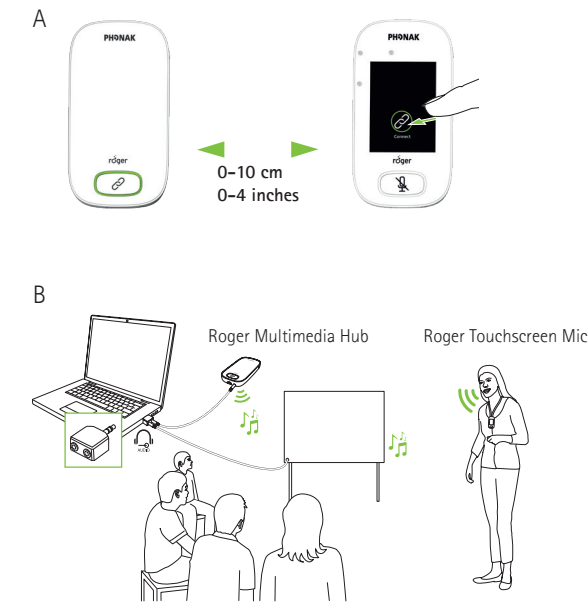
3

Stand-alone use
Stand-alone Verwendung
Utilisation autonome
Utilización autónoma



4

Connecting to whiteboard
Verbinden mit interaktiver Wandtafel
Connecter avec un tableau interactif
Conectar con una pizarra interactiva










 Sonova Communications AG
 Herrenschwandweg 4
 CH-3280 Murten
 Switzerland

www.phonak.com/phonak-roger




Indicator light
 Statusanzeige
 Témoin lumineux
 Indicador luminoso








-  On/Off
-  Charging | Aufladen | Charge | Cargar
-  Fully charged | Voll aufgeladen | complètement chargé | Completamente cargado
-  Audio broadcast | Audioübertragung | transmission audio | transmisión audio
-  Connecting | Verbinden | Connexion | Conectar
-  Connection successful | Verbindung erfolgreich | Connexion réussie | Conexión exitosa
-  Connection failed | Verbindung fehlgeschlagen | Connexion échouée | Conexión fracasada

Roger Multimedia Hub = Secondary

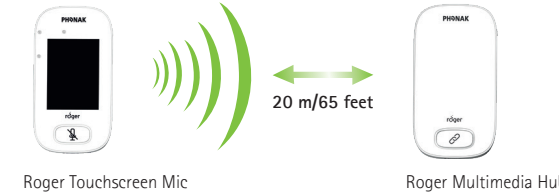
-  Primary not available | Primary nicht verfügbar | Primary indisponible | Primario no disponible


Indicator light
 Statusanzeige
 Témoin lumineux
 Indicador luminoso



-  On/Off
-  Charging | Aufladen | Charge | Cargar
-  Fully charged | Voll aufgeladen | complètement chargé | Completamente cargado
-  Switched on | Eingeschaltet | Allumé | Encendido
-  Recharge device | Gerät aufladen | Recharger appareil | Cargar dispositivo

Operation range
 Betriebsreichweite
 Plage de fonctionnement
 Alcance en funcionamiento




 Out of range! If distance greater than 20 meters/65 feet
 Ausser Reichweite! Wenn der Abstand größer als 20 Meter ist
 Hors de portée! Si distance supérieure à 20 mètres
 ¡Fuera de alcance! Si la distancia es mayor que 20 metros





Reset
 Zurücksetzen
 Réinitialiser
 Reiniciar



 Only Roger transmitters running on software version 4.x are compatible with Roger Multimedia Hub.
 Nur Roger Sender, die über die Software-Version 4.x verfügen, sind mit dem Roger Multimedia Hub kompatibel.
 Seuls les émetteurs Roger ayant la version 4.x ou plus élevée sont compatibles avec Roger Multimedia Hub.
 Sólo emisores Roger que utilizan la versión de software 4.x y la siguientes son compatibles con Roger Multimedia Hub.

Operating conditions:
 Betriebsbedingungen: 0° to +45° Celsius
 Conditions de fonctionnement: 32° to +113° Fahrenheit
 Condiciones de funcionamiento:

<95%
 Relative humidity | relative Luftfeuchtigkeit | humidité relative | humedad relativa
 >8 h

 Waste Electrical and Electronic Equipment Directive
 Elektro- und Elektronikgeräte-Abfall Richtlinie
 Directive déchets d'équipements électriques et électroniques
 Instrucciones de Residuos de Aparatos Eléctricos y Electrónicos

 CE marking
 CE-Kennzeichnung
 Marquage CE
 Marca CE

 Important to read
 Wichtig zu lesen
 Important de lire
 Importante de leer

 Class II  Indoor use

 ACMA - AUS/NZ