

# Clean and Care Instructions

## ActiveVent™ Receiver

Congratulations on the purchase of your hearing aids. Your hearing aids have been fitted with ActiveVent speakers. It is important to care and maintain your hearing aids.

### Why is cleaning important?

1. Ensures better daily performance
2. Extends lifespan of the devices
3. Prevents repair issues that can result from wax build-up and moisture



## How to clean

### 1. Hearing aid

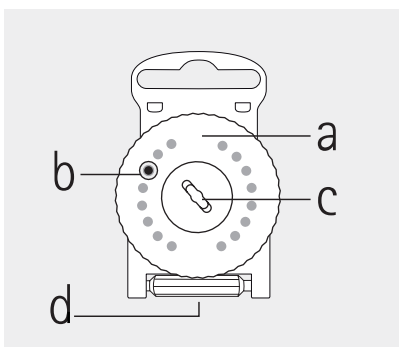
Wipe your hearing aid daily with a damp cloth.

### 2. Earpiece

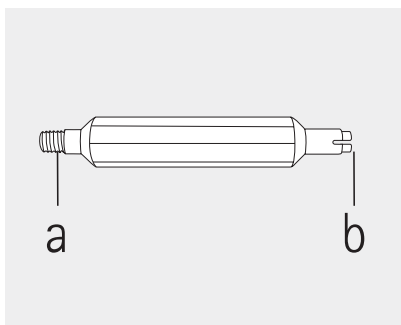
Wipe your earpiece daily with a damp cloth.

### 3. Replace wax filter

Weekly wax filter replacement is recommended. However, your hearing care professional will advise the appropriate interval for best performance. Continue reading on the next page on how to replace.



- a) rotating disk
- b) new filter
- c) disposal slot for used filters
- d) changing tool

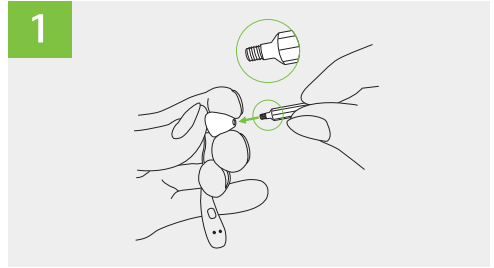


- a) threaded end for removing used filter
- b) slotted end for inserting new filter

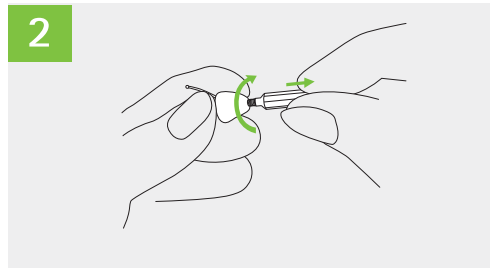
# How to replace the wax filter

## Remove your used wax filter

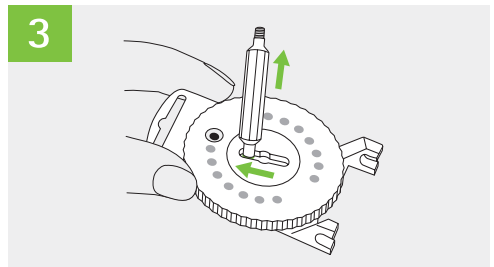
1. Hold the earpiece firmly and secure the rear of the speaker with your finger to prevent it from dislodging from the earpiece. Insert the threaded end of the changing tool into the opening of the speaker, while supporting the speaker with your finger or thumb.



2. Rotate the changing tool clockwise until you feel some resistance, then remove the used wax filter by pulling the changing tool away from the speaker.

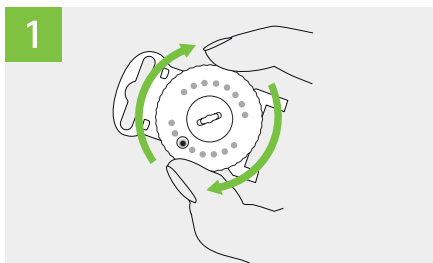


3. Dispense the used wax filter by sliding the changing tool along the slot in the middle of the dispenser and lifting the changing tool away.

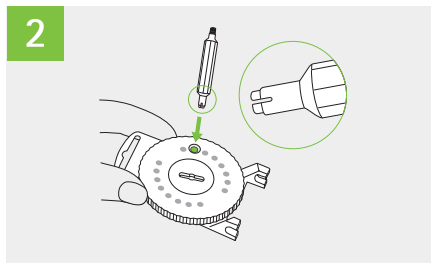


## Insert a new wax filter

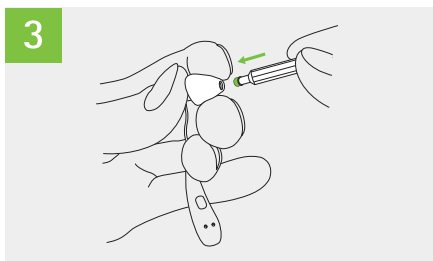
1. Rotate the disk of the dispenser until a new wax filter is visible in the window.



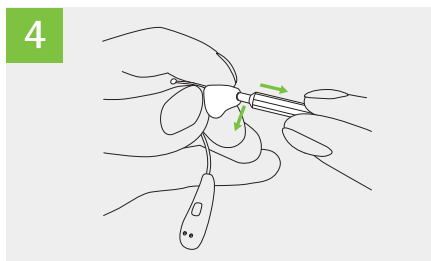
2. Pick up the new wax filter by inserting the slotted end of the changing tool.



3. Hold the earpiece firmly and support the speaker at its end where the cable is attached. Insert the new wax filter gently into the opening of the speaker.



4. a) Angle the changing tool slightly as you pull it away from the speaker.  
b) Re-attach the changing tool to the wax filter dispenser.



[www.phonak.com/activevent](http://www.phonak.com/activevent)

029-1153-02/V1.00/2020-08/Clean and Care ActiveVent Instruction  
© 2020 Sonova AG All rights reserved

**sonova**  
HEAR THE WORLD



Sonova AG · Laubisrütistrasse 28  
CH-8712 Stäfa · Switzerland



Sonova Deutschland GmbH · Max-Eyth-Str. 20  
70736 Fellbach-Oeffingen · Germany



0459



7 613389 1520224

028-2296-02/V1.00/2021-07 /kt © 2021 Sonova AG. All rights reserved.