

# Roger™ Touchscreen Mic

User Guide



roger

# 1 Contents

2	Welcome	7	11.3	Carrying case	22
3	At a glance	8	11.4	Belt clip and Boom microphone	22
4	Touchscreen display	9	11.5	Protective case	23
4.1	Home screen	9	11.6	Screen protector	23
5	Quick view	10	11.7	UK/AU adapter	23
6	Buttons/icons	11	12	Basic functions	24
6.1	Function icons	11	12.1	Turn on the microphone	24
6.2	Function icons status	14	12.2	Turn off the microphone	24
6.3	Navigation icons	14	12.3	Wake/Sleep	24
6.4	Status bar icons	14	12.4	Mute/Unmute	25
7	Indicator lights	16	13	Functions	26
8	Accelerometer	17	13.1	Connect	26
9	Lanyard	18	13.2	Check	27
10	Standard accessories	19	13.3	Disconnect	28
10.1	Charger	19	13.4	List devices	28
10.2	Lanyard	20	13.5	SoundField	30
10.3	Pouch	20	13.6	RogerDirect	30
10.4	Audio cable	20	14	Advanced Roger Touchscreen Mic network options	33
10.5	Recording cable	20	14.1	Network	33
11	Optional accessories	21	14.2	SubNet	33
11.1	Charging Rack	21	14.3	JoinNet	34
11.2	Roger WallPilot	22			

14.4	NewNet	35	16.3.1.2	EasyGain level	48
15	Microphone modes	36	16.3.1.3	CI profile	48
15.1	Automatic mode – How does it work?	36	16.3.1.4	Default settings	49
15.2	Small Group mode	37	16.3.2	Network mode	49
15.3	Lanyard mode	38	16.3.2.1	Network mode – Mixing	49
15.4	Pointing mode	39	16.3.2.2	Network mode – Primary talker	51
16	Settings	40	16.3.2.3	Network mode – Equal talker	51
16.1	General settings	40	16.3.2.4	Understanding microphone “roles” in the network	51
16.1.1	Languages	40	16.3.3	View network	52
16.1.2	Name	40	16.3.4	Audio settings	53
16.1.3	Mute button	41	16.3.4.1	Input	53
16.1.4	Power	41	16.3.4.2	Output (tablet/computer)	53
16.1.5	Reconfiguration	42	16.3.5	Verification mode	55
16.1.6	About	42	16.3.6	Roger Pass-around	55
16.1.7	Legal	43	16.3.6.1	Volume button	59
16.2	Display settings	44	16.3.6.2	Automute	60
16.2.1	Brightness	44	16.3.6.3	Mute button	60
16.2.2	Screen saver	44	16.3.6.4	Push-to-talk (PPT)	61
16.2.3	Quick menu	45	16.3.7	DigiMaster audio IN	62
16.3	Advanced Settings	47	16.3.8	Pointing mode	62
16.3.1	Roger receiver settings	47			
16.3.1.1	Name	47			

16.3.9	Connect settings	63
16.3.9.1	Connect	63
16.3.9.2	Mass Connect	64
17	Reset the microphone	65
18	Technical data	66
18.1	Roger wireless technology standard	66
18.2	Operating range	66
18.3	Network compatibility	67
19	FAQs (Frequently asked questions)	68
20	Troubleshooting	70
21	Service and warranty	74
22	Compliance information	76
23	Information and description of symbols	78
24	Important safety information	81
24.1	Hazard warnings	81
24.2	Product safety information	83
24.3	Other important information	86

## 2 Welcome

Congratulations on choosing the Roger Touchscreen Mic from Phonak. The Roger Touchscreen Mic is a premium-quality product developed by Phonak, one of the world's leading hearing health care companies.

Please read this user guide thoroughly to benefit from all the possibilities your Roger Touchscreen Mic offers. If you have any questions, please consult your hearing care professional or local Phonak support center.

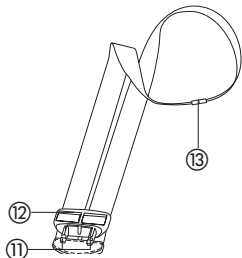
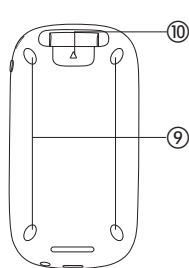
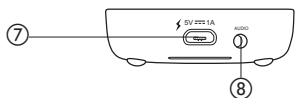
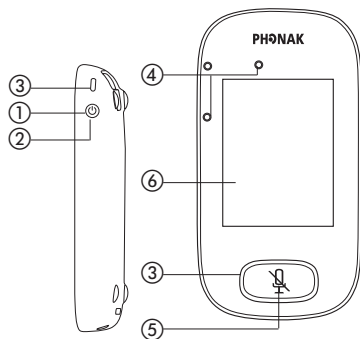
For quicker reading, Roger Touchscreen Mic is often referred to in this document as the "microphone".

Phonak – life is on  
[www.phonak.com](http://www.phonak.com)

This user guide is valid for:  
**Roger Touchscreen Mic 3**  
 CE mark applied 2024



## 3 At a glance

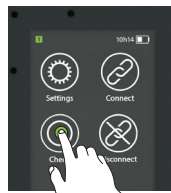


- ① On/Off
- ② Wake/Sleep
- ③ Indicator light
- ④ Microphones
- ⑤ Mute
- ⑥ Touchscreen display
- ⑦ Micro-USB
- ⑧ 3.5 mm / 1/8" jack
- ⑨ Feet
- ⑩ Lanyard: clip/remove button
- ⑪ Lanyard clip
- ⑫ Length adjustment
- ⑬ Safety breakaway

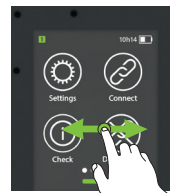
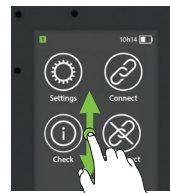
## 4 Touchscreen display

Just two touch-screen gestures are needed to use the microphone: tap and swipe.

### Tap



### Swipe



### 4.1 Home screen

This screen contains four icons and features the white progress dot in its left position.

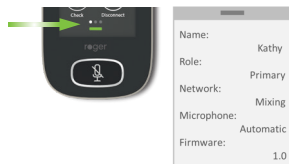


## 5 Quick view

Use this function to get a quick overview of the microphone's status.

### How to use it:

Swipe up from the bottom of home screen.



Name	Customize this for easy microphone identification
Role	Displays microphone's status in the network: Stand-alone, Primary or Secondary
Network	Displays current Network mode (selected via <b>MultiTalker Network</b> menu): <b>Mixing, Primary talker</b> or <b>Equal talker</b>
Microphone	Displays current Microphone mode (selected via the <b>Mic mode icon</b> ): <b>Automatic, Small Group, Lanyard</b> or <b>Pointing</b>
Firmware	Displays microphone's current software version





## 6 Buttons/icons





The microphone features two buttons. These control its mute function and powering on/off.

All other functions and settings are controlled by tapping touch-screen icons.

### 6.1 Function icons

	Icon	Function
Home screen		Opens the microphone's <b>Settings</b> menu.
	Settings	
		Connects Roger devices to same network as microphone.
	Connect	
		Wirelessly checks that another device is connected or working properly.
	Check	
		Disconnects a device from microphone's network.
	Disconnect	

	Icon	Function
Screen 2		Lists Roger devices connected to the microphone in a classroom network.
	List devices	
		Adjusts volume of a Roger Dynamic SoundField DigiMaster loudspeaker.
	SoundField	
		Contains an unlimited number of Roger receivers for hearing aids with RogerDirect.
RogerDirect		
		Opens the Mic mode menu.
Mic mode		

	Icon	Function
Screen 3		Creates a temporary subnetwork (used to speak to one/more students without disturbing the rest).
	SubNet	
		Returns to microphone's network from a SubNet.
	Network	
		Joins another microphone or receiver's existing network.
JoinNet		
		Cancel the microphone's network (inc. SubNets).
NewNet		

## 6.2 Function icons status



Disabled

Tapped

Selected

## 6.3 Navigation icons

These are the icons you see when navigating between, and confirming, different functions and settings.

- **Return icon** (appears top left of screen) – returns to previous screen.
- **Home icon** (appears top left) – returns to last-viewed home screen.
- **Confirm check mark** (appears top right) – confirms choice and returns to previous screen.

## 6.4 Status bar icons

Located at the top of the screen, these provide different types of information about your microphone.

	Symbols	Meaning
Always visible		Battery status / Charging / Low battery
		Remaining use time
		Microphone mode: Lanyard/Small Group/Pointing
		Network mode: Network/SubNet
Visible only in use		Audio: Input/Output/Boom
		USB cable connected
		Network role: Stand-alone/Primary/Secondary



## 7 Indicator lights

The microphone features two indicator lights: one above the **On/Off** button, the other surrounding the large **Mute** button.



On/Off

Charging

Fully charged



Mute



Primary not available



On/Off

Charging

Fully charged



Switched on



Recharge device

## 8 Accelerometer

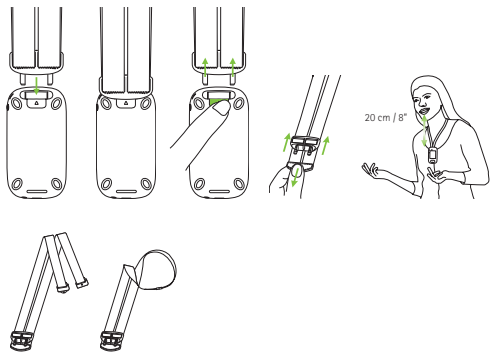
This internal component analyzes the microphone's orientation, adapting/optimizing its three microphones accordingly.

## 9 Lanyard

This is used to wear the microphone around the neck.

- Distance from mouth to top of microphone should be approx. 20 cm / 8".
- Lanyard features a safety breakaway for urgent removal.

How to use it:



## 10 Standard accessories

The following accessories are included in the microphone's box.

- Charger
- Lanyard
- Pouch
- Audio cable
- Recording cable

### 10.1 Charger

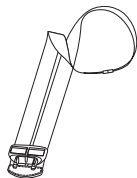
The microphone contains a rechargeable lithium polymer battery. To charge this, connect the microphone to a power outlet using the supplied micro USB cable and the power adapter.

When fully charged (a solid green light is displayed), disconnect power supply from mains and USB cable from microphone.



## 10.2 Lanyard

This clips into the top of the microphone.



## 10.3 Pouch

Use this to protect the microphone from scratches. Hand wash only.



## 10.4 Audio cable

Used to connect an external audio device.



## 10.5 Recording cable

Used to record the microphone's output signal on a computer or tablet.



# 11 Optional accessories

The following optional accessories are not included in the box.

- Roger Charging Rack
- Roger WallPilot
- Carrying case
- Belt clip
- Boom microphone
- Protective case
- Screen protector
- UK/AU adapter

## 11.1 Charging Rack

Use this to charge up to four Roger for Education devices.



### 11.2 Roger WallPilot

Automatically connects Roger receivers and microphones to a room's Roger network.  
Wall-mounted.



### 11.3 Carrying case

Keeps the microphone safe during transit.



### 11.4 Belt clip and Boom microphone

For use when lanyard is not available. When boom microphone is in use, Automatic microphone mode is disabled. To access modes such as **Small Group** mode, remove the boom microphone's cable from Roger Touchscreen Mic.

**i** The EasyBoom microphone for Roger inspiro cannot be used with Roger Touchscreen Mic.

### 11.5 Protective case

Protects the microphone from accidental damage.

### 11.6 Screen protector

Prevents display from being scratched. May need replacing in case of intensive use.

### 11.7 UK/AU adapter

Country-specific adapter for the microphone's power supply.

Please visit [www.phonak.com](http://www.phonak.com) to learn more.

## 12 Basic functions

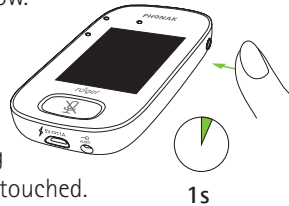
### 12.1 Turn on the microphone

Press and hold the **On/Off** button until indicator light blinks green.



### 12.2 Turn off the microphone

Press and hold **On/Off** button until pop-up window appears. Follow instructions in this window.

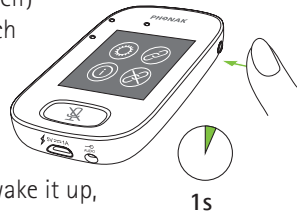


### 12.3 Wake/Sleep

Sleep puts the microphone's display to sleep, saving its battery and preventing anything from happening if the screen is touched.

The microphone sleeps (locks itself) automatically if you do not touch the display for a set period of time (customize this time via **Settings / Display / Screen saver**).

To put microphone to sleep or wake it up, press **On/Off** button.



### 12.4 Mute/Unmute

#### Mute

- Press the **Mute** button
- Indicator light blinks red, indicating device is muted and Mute icon is briefly displayed on-screen



#### Unmute

- Press **Mute** button again to unmute microphone.

## 13 Functions



### 13.1 Connect

Connects nearby Roger devices, such as receivers, microphones and DigiMasters, to the same network as the Roger Touchscreen Mic.

#### How to use it:

- Roger device to connect must be turned on and within 10 cm / 4" of the Roger Touchscreen Mic
- Tap Connect to add device to network (screen 1)



Distance  
0-10 cm  
0-4 inches



### 13.2 Check

Wirelessly checks data in another Roger device.

#### How to use it:

- Roger device to be checked must be turned on and within 10 cm / 4" of the Roger Touchscreen Mic
- Tap Check (screen 1)

#### What is displayed?

- Network status
- Name
- Device type
- Serial number
- Hardware version
- Firmware version
- Battery status (Roger device checked)
- Total usage time (usage time when turned on)
- Link quality (statistics after 10 min of use)

Data shown may differ with device type.



### 13.3 Disconnect

Disconnects Roger devices from the microphone's network.

#### How to use it:

- Place Roger device (turned on) within 10 cm / 4" of microphone
- Tap **Disconnect** (screen 1)



### 13.4 List devices

Lists those Roger devices, such as Roger receivers, that are turned on and in the current classroom network.

#### How to use it:

- Ensure all Roger devices are turned on
- Swipe screen right-left to locate **List devices** icon
- Tap **List devices** (a spinning "searching" symbol will be displayed)

- Hold Roger microphone within 10 cm / 4" of Roger devices\*
- Roger devices will be listed (listed devices already connected to microphone will show a **Connect** icon)
- To stop process at any time, tap **Home**

Time required to list all devices may vary.

\* Microphone may also detect devices located further away.



### 13.5 SoundField

Adjusts volume of a connected Roger Dynamic SoundField DigiMaster loudspeaker. Icon appears grey if no DigiMaster is connected to the microphone.

#### How to use it:

- Ensure Roger DigiMaster is turned on
- Swipe screen right-left to locate **SoundField** icon
- Tap **SoundField**
- Adjust volume using +/-
- Mute SoundField from the arrow below +/- (SoundField running software version 4.0 or later)

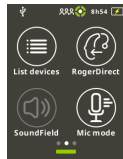


### 13.6 RogerDirect

Contains an unlimited number of Roger receivers for hearing aids with RogerDirect.

#### How to use it:

- Swipe screen right-left to locate RogerDirect icon



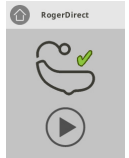
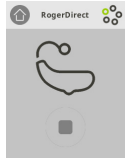
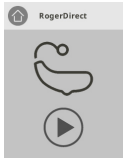
- Tap RogerDirect

• "Please wait" pop-up window is shown. Please note that it may take few seconds to load

- Switch on a hearing device and place it on the Roger Touchscreen Mic. Ensure the hearing device is located within 10 cm / 4" of Roger Touchscreen Mic

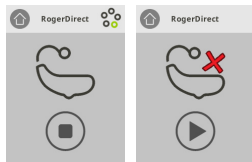
- Tap press play icon

• Wait until you see the check on the display. Then switch off the hearing device and repeat the process for another hearing device



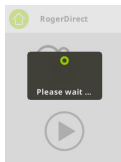


- The process can be interrupted by tapping the **stop** icon. If the set-up failed (shown with the red cross icon), please ensure the hearing device is on and located within 10 cm / 4" of Roger Touchscreen Mic and repeat the process



- Tap **Home** (top left) when ready

- "Please wait" pop-up window is shown. Please note that it may take few seconds to go back to the homescreen



## 14 Advanced Roger Touchscreen Mic network options

Roger technology enables the following advanced network functions.



### 14.1 Network

Returns the microphone to the existing room network.

**How to use it:**

- **Network** is the microphone's default mode – its icon is automatically selected (circled green)
- There is usually no need to tap the **Network** icon, except after using a **SubNet** (see 14.2 SubNet)



### 14.2 SubNet

Use this to speak separately to one or more students, without disturbing the rest of the connected group, by creating a temporary subnetwork.

Useful for: one-on-one instruction, small-group instruction, repetition/reinforcement of instructions.

How to use it:

- Tap **SubNet**
- Tap **Connect** within 10 cm / 4" of receiver of each required student
- Talk into microphone as normal

To stop using **SubNet** (return to room's existing network):

- Tap **Network**
- Either: student passes in front of Roger WallPilot (optional accessory)
- Or: tap **Connect** within 10 cm / 4" of each student's receiver



### 14.3 JoinNet

Use this to join another microphone's network, without interrupting the group, via any microphone or receiver in that network.

Useful for: coteachers, teaching assistants.

How to use it:

- Swipe screen left-right to locate **JoinNet** icon

- Tap **JoinNet** within 10 cm / 4" of Roger Touchscreen Mic, receiver or WallPilot in desired network



### 14.4 NewNet

Erases the microphone's current network (including SubNets). All required devices, e.g., receivers and additional microphones, will need reconnecting.

How to use it:

- Swipe screen left-right to locate **NewNet** icon
- Tap **NewNet**
- Tap Yes to confirm

## 15 Microphone modes

The Roger Touchscreen Mic features four microphone modes to suit every learning situation:

- **Automatic** (default)
- **Small Group**
- **Pointing**
- **Lanyard**

Please note that the selected microphone mode resets to automatic after on/off. Selected microphone mode is saved if Quick Menu is applied.



### How to change microphone mode:

- Swipe screen left-right to locate **Mic mode** icon
- Tap **Mic mode**
- Select preferred microphone mode

### 15.1 Automatic mode – how does it work?


The microphone automatically chooses its own microphone mode: either **Small Group**, **Pointing** (if enabled) or **Lanyard**. This automated choice is based on the microphone's built-in accelerometer, which analyzes its orientation.

### 15.2 Small Group mode

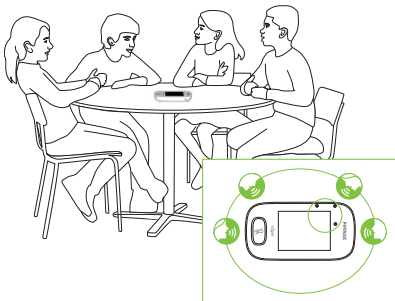
Use this to listen in small-group situations comprising two to five students.

#### How to use it:

- Place Roger Touchscreen Mic in center of table
- Microphone will detect the students' voices, automatically orienting its three built-in microphones towards the current speaker
- **Small Group** mode icon is visible in the status bar

 In **Small Group** mode, connection to all secondary microphones and DigiMasters will be temporarily suspended.

## Small Group



## 15.3 Lanyard mode

Use this when wearing the microphone around the neck. The Lanyard mode icon is visible in the status bar.


## Lanyard



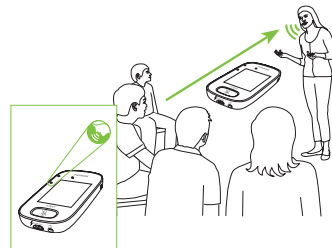
## 15.4 Pointing mode

Sometimes the person responsible for using the Roger Touchscreen Mic is the student themselves. They may, for example, take the device with them to different classes. Pointing mode allows a student to simply point the microphone in the direction of the teacher to capture their voice (range: 4 m / 13').

- Pointing mode icon is visible in status bar
- Pointing mode is only available when microphone is used as a stand-alone device

 **Pointing** mode is deactivated by default (shown grey in Mic mode menu). To activate it, tap **Settings/Advanced/Pointing**.

## Pointing



## 16 Settings



Use this menu to adjust the microphone's settings. Some menu options appear grey until used.

How to use it:

- Tap **Settings**
- Change settings required
- When done, tap **Return** (top left)
- Then tap **Home** (top left)

### 16.1 General Settings

#### 16.1.1 Languages

Sets microphone's interface language.

How to use it:

- Select preferred language in menu

#### 16.1.2 Name

Allows you to give your microphone a custom name for easier identification.

How to use it:

- Swipe to, then tap each required letter.  
To delete last letter/number, tap **X** (on right)

#### 16.1.3 Mute button

Adjusts the following mute button settings:

- Brightness
- Pattern

##### Brightness

How to use it:

- To increase brightness, tap **+**
- To decrease brightness, press **-**

##### Pattern

How to use it:

- Select pattern: **Blinking** or **Steady**

#### 16.1.4. Power

Adjusts the microphone's power emission (affecting its operating range) in order to extend the battery's operating time.

How to use it:

- Select function required:
- **Standard** (default) (100 mW, range: 25 m / 80')
- **Reduced** (16 mW, range: 12 m / 39')

### 16.1.5 Reconfiguration

Resets Roger Touchscreen Mic's language settings to factory "out of the box" settings.

**How to use it:**

- Select **Activate/Deactivate** (default)

When activated, you will be asked to select the microphone's language the next time it is turned on. When deactivated, the currently selected language will be kept when microphone is turned off.

### 16.1.6 About

Provides the following information about your Roger Touchscreen Mic device:

- Device type
- Serial number
- Firmware version
- Hardware version
- Total usage time

**How to use it:**

- Select the microphone information required

### 16.1.7 Legal

Font license disclaimer. In English only.

## 16.2 Display settings

### 16.2.1 Brightness

How to use it:

- To increase brightness, tap +
- To decrease brightness, press –

### 16.2.2 Screen saver

How to use it:

- Select **activation time** required

Default **activation time** is 30 seconds.

### 16.2.3 Quick menu

Locks most icons (see below) in order to avoid unintended use. Requires a passcode to be activated.

All icons will be locked except: **Connect, Check, Disconnect, Settings** (since these four icons are essential for daily use of the microphone). Physical buttons will not be locked.



How to set passcode:

- Select **Set passcode**
- Set a four-digit passcode
- To delete the last digit, tap X (on right)
- When done, tap **Home**

How to change passcode:

- Tap **Settings**
- Enter passcode
- Select **Quick menu**
- Select **Change passcode**
- Enter new passcode

How to disable **Quick menu**:

- Tap **Settings**
- Enter passcode
- Select **Quick menu**
- Select **Disable Quick menu**

In the case of passcode being forgotten, device must be reset (see 17 Reset the microphone).

## 16.3 Advanced settings

### 16.3.1 Roger receiver settings

Use this function to configure the following Roger receiver data.

- **Name** (for easy identification in network)
- **EasyGain** (adjust level)
- **CI profile** (Roger X only)
- **Default settings**

How to use it:

- Ensure Roger receiver is located within 10 cm / 4" of Roger Touchscreen Mic
- Select **Roger receiver settings**
- Select data to be configured

#### 16.3.1.1 Name

How to use it:

- Select **Name**
- Enter user name using scroll key
- To delete the last letter/number, tap **X** (on right)



### 16.3.1.2 EasyGain level

Each +/- step represents a change in gain of 2 dB (up to max. 8 dB higher/lower than middle setting).

How to use it:

- Select **EasyGain** level by pressing + or – to adjust gain of Roger receiver attached to hearing instrument

### 16.3.1.3 CI profile

How to use it:

- Select **CI profile** as per list below
- **Automatic** (for all CI models not mentioned in the list below)
- **Profile 2** (Opus 2)
- **Profile 3** (Naída CI + ComPilot/Sonnet)
- **Profile 4** (Harmony/Auria +8 dB EasyGain)
- **Profile 5** (MicroLink CI S)
- **Profile 9** (Nucleus 5, 6)
- Profiles 1, 6, 7, 8 are not currently applicable

Tap question mark (top right) to view **CI profile/model** list.

Please consult [www.phonakpro.com](http://www.phonakpro.com) (FAQ section) to check **CI profiles** for latest CIs on the market.

### 16.3.1.4 Default settings

Resets a Roger receiver to its default settings.

How to use it:

- Select **default settings**

### 16.3.2 Network mode

Should multiple microphone users need to talk to receivers in the same network, different modes are available:

- **Mixing** (by default)
- **Primary Talker**
- **Equal Talker**

How to use it:

- Select your preferred **Network mode**

#### 16.3.2.1 Network mode – Mixing

Designed for coteaching situations, where for example a teacher and a teaching assistant are teaching together. Both microphones are able to pick up and transmit voice signals simultaneously.



- i** If a Roger Pass-around is also being used in class, **Mixing** mode also applies to this device. If several Roger Pass-arounds are being used, the first device to detect a voice signal will be activated, in "first in, first served" fashion.

### Mixing with Roger Multimedia Hub

When a Roger Multimedia Hub transmitter is available in the network and the talker is wearing Roger Touchscreen Mic, audio from the Roger Multimedia Hub and the talker's voice will be mixed.



### 16.3.2.2 Network mode – Primary Talker

Gives the wearer of the "Primary" Roger microphone first priority when speaking (also see 16.3.2.4 Understanding microphone "roles" in the network).

### 16.3.2.3 Network mode – Equal Talker

In the case of two or more Roger microphone users, the first person to speak is given priority (aka "first in, first served").

### 16.3.2.4 Understanding microphone "roles" in the network

Multiple microphones can be connected to the same network. Each microphone plays one of three distinct roles: stand-alone, primary or secondary.

#### Stand-alone role

A microphone plays the Stand-alone role when it is the only Roger microphone in the network. In this case, all its microphone modes can be used (in fact, **Pointing** mode is only available in Stand-alone).

### Primary role / Secondary role

When there is more than one microphone in a network, one device plays the Primary role (this is the device used to manage the network), while the others play Secondary roles.

It is easy to identify whether a microphone is Primary or Secondary: if Primary, the number 1 is displayed over a green background on the left of its status bar. If Secondary, the number 2 is displayed over a white background.

### 16.3.3 View network

Displays which microphones (MultiTalkers) or loudspeakers (DigiMasters) are currently connected to the Roger Touchscreen Mic in the network. These devices must be turned on to be shown in the list.

#### How to use it:

- Select **View MultiTalkers** (Roger microphones and Roger media transmitters) or **View DigiMasters** (Roger DigiMasters)

### 16.3.4 Audio settings

Roger Touchscreen Mic offers the following audio connection possibilities.

- **Input**
- **Output (tablet)**
- **Output (computer)**

#### 16.3.4.1 Input

Allows Roger Touchscreen Mic to broadcast the audio from any multimedia device to its network.

#### How to use it:

- Plug one end of supplied 3.5 mm / 1/8" cable into multimedia device's audio out (i.e. headphone) jack
- Plug other end into Roger Touchscreen Mic's 3.5 mm / 1/8" (audio) jack
- Select **Input**

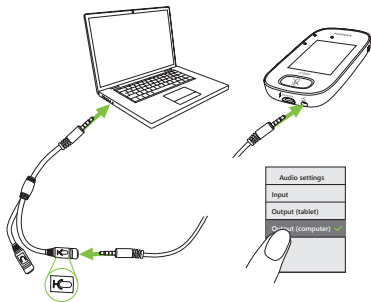
#### 16.3.4.2 Output (tablet/computer)

Sends the talker's voice from Roger Touchscreen Mic to a computer or tablet for recording.

### How to use it:

- Plug one end of supplied 3.5 mm / 1/8" cable into microphone jack of the recording cable
- Plug other end of 3.5 mm / 1/8" cable into Roger Touchscreen Mic's 3.5 mm / 1/8"(audio) jack
- If tablet/computer features separate microphone input: plug other end of recording cable into this microphone jack
- If tablet/computer features single headphone input (no separate microphone input): plug other end of recording cable into this headphone jack
- Select **Output (tablet)**

The sole difference between **Output (tablet)** and **Output (computer)** settings is the output level of the Roger Touchscreen Mic's audio connector.



### 16.3.5 Verification mode

Used by professionals to verify a device according to the Roger POP (Phonak Offset Protocol). When **Verification** mode has been activated, an orange banner will be displayed below the status bar.

#### How to use it:

- Select **Activate/Deactivate** (default)

**Verification** mode is automatically deactivated when microphone is rebooted (turned off and back on).

### 16.3.6 Roger Pass-around

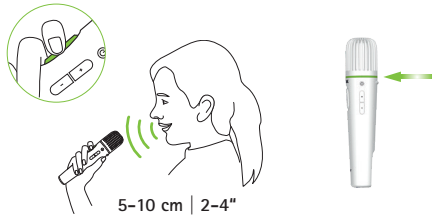
Changes the settings of any connected Roger Pass-around devices located in the same room.

#### How to use it:

- Tap **Roger Pass-around**
- Select function to set:
  - Volume button
  - Automute
  - Mute button

### How to use Roger Pass-around (PTT):

- Hold Roger Pass-around to mouth
- Press and hold microphone button to talk
- Green light indicates voice is being broadcast to Roger receivers and SoundField
- If other Roger Pass-arounds are in network, their indicator lights will turn orange
- When done talking, release microphone button
- Indicator light will turn off (no color)



### How to use Roger Pass-around (VAD):

- Hold Roger Pass-around to mouth
- Green light indicates voice is being broadcast to Roger receivers and SoundField

- When done talking, indicator light will turn off (no color)



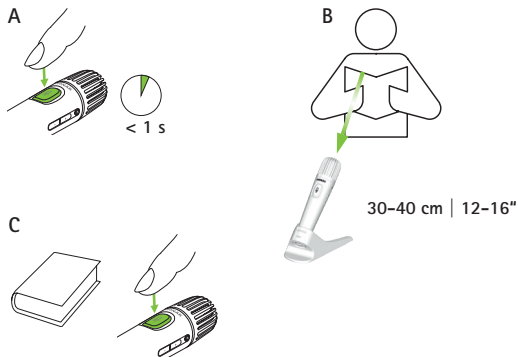
### Reading a book with the Roger Pass-around

When a student is reading to the group, we recommend using Roger Pass-around with its table stand.

This approach allows the student to use both his/her hands to hold the book. Plus, the Roger Pass-around's accelerometer detects its position in the stand and automatically adapts its internal microphone settings to optimize its voice pick-up performance.

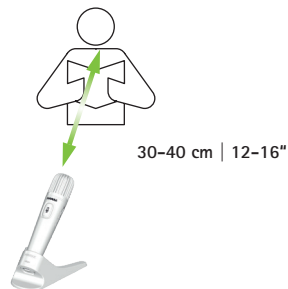
### How to read a book with PTT activated:

- Press Roger Pass-around's microphone button
- Green light indicates Roger Pass-around's microphone is active
- If other Roger Pass-arounds are in network, their indicator lights will turn orange
- Hold book with both hands and talk in direction of Roger Pass-around
- When done, press microphone button once more to deactivate and unlock
- All indicator lights will turn off (no color)



### How to read a book with PTT deactivated (VAD default):

- Hold book with both hands and talk in direction of Roger Pass-around
- Indicator light will turn green, indicating student's voice is being broadcast to Roger receivers and SoundField
- If other Roger Pass-arounds are in network, their indicator lights will not change (no color)
- When done, the indicator light will turn off (no color)



#### 16.3.6.1 Volume button

To avoid students adjusting the volume, this button should remain locked.

How to use it:

- Tap **Lock** or **Unlock** (default)

### 16.3.6.2 Automute

When Roger Pass-around is lying on a table, it will automatically mute itself (**Automute**).

How to use it:

- To disable or enable **Automute**, tap **Deactivate** or **Activate**

### 16.3.6.3 Mute button

This button is deactivated by default to avoid it being inadvertently pressed when the device is passed around in class. Can be activated if required.

How to use it:

- To enable or disable the mute button, press **Activate** or **Deactivate** (default)

### 16.3.6.4 Push-to-Talk (PTT)

This setting enables any Roger Touchscreen Mic user to activate/deactivate the **Push-to-Talk (PTT)** function of a Roger Pass-around device. The Roger Touchscreen Mic does not include its own PTT function.

- ① Only one Roger Pass-around user will be broadcast to the network at one time. Priority is given to the first user to press their device's microphone (**PTT**) button.

The Roger Pass-around offers two different ways of picking up the talker's voice:

- Default (as with all Roger microphones): automatic Voice Activity Detector (**VAD**)
- Optional: manual Push-to-Talk (**PTT**)

Since **PTT** is deactivated by default, this function must be activated by Roger Touchscreen Mic before use.

### How to activate/deactivate PPT:

- Select Activate or Deactivate

### 16.3.7 DigiMaster audio IN

Adjusts the audio input volume of a Roger DigiMaster loudspeaker.

#### How to use it:

- To increase volume, press +
- To decrease volume, press –

### 16.3.8 Pointing mode

Activates/deactivates the microphone's Pointing mode.

#### How to use it:

- Select Activate or Deactivate as required

When Pointing mode has been deactivated, the Pointing option in the Microphone mode menu will appear greyed out and can no longer be selected.

### 16.3.9 Connect settings

Selects the type of Connect function used.

#### How to use it:

- Select the type of Connect function required:
- **Connect\***
- **Mass Connect\*\***

\* Connection of each device is confirmed on-screen.

\*\* Connect icon is relabeled **Mass Connect** on home screen and no individual confirmation of Roger receivers connection.

### 16.3.9.1 Connect

#### How to use it:

- Position device to be connected within 10 cm / 4" of microphone
- Tap **Connect**



### 16.3.9.2 Mass Connect

How to use it:

- Tap **Mass Connect**
- **Spinning connecting** symbol is displayed
- Move microphone within 10 cm / 4" of each device to be connected
- When complete, tap on **spinning connecting** symbol

## 17 Reset the microphone

Cleans up session memory including protection password.

How to use it:

- Press and hold **On/Off** and **Mute** buttons simultaneously for at least eight seconds
- Indicator light will blink green and microphone will automatically reboot (turn off and on again)



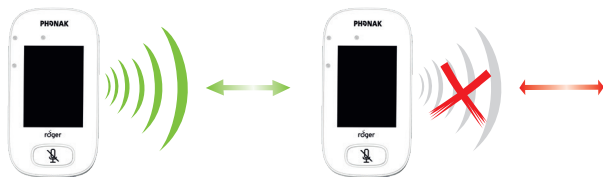
## 18 Technical data

### 18.1 Roger wireless technology standard

Roger is a digital, adaptive wireless technology standard developed by Phonak that provides optimal listening in noisy environments and over distance. Roger operates in the 2.4 GHz band.

### 18.2 Operating range

The operating range between the Roger Touchscreen Mic and receivers, microphones, media transmitters is 25 m / 80'.



If distance between devices is greater than 25 m/80', voice broadcasting from microphone is interrupted.

### 18.3 Network compatibility

Only Roger transmitters or audio hub transmitters (running software version 4.0 or later) are compatible with Roger Touchscreen Mic. Follow the instructions displayed in the pop-up windows when connecting devices.

## 19 FAQs (Frequently Asked Questions)

How many Roger devices can be connected in the same network by the primary Roger microphone?

- Unlimited number of Roger receivers
- Up to 35 Roger microphones
- Maximum one Roger Multimedia Hub when mixing network mode is selected
- Maximum one Roger DigiMaster 5000
- Up to twenty Roger DigiMaster 7000
- Up to five Roger DigiMaster X

Is it possible to integrate Roger Touchscreen Mic to an existing classroom network, where the primary is a Roger inspiro?

- Yes, press connect from the Roger inspiro within 10 cm / 4" of the Roger Touchscreen Mic
- Roger inspiro must be in Roger only mode

Is it possible to integrate Roger inspiro into a classroom network, where the primary is a Roger Touchscreen Mic?

- Yes, in the network mode of the Roger Touchscreen Mic, select Primary Talker mode or Equal Talker mode
- Then press Connect on the Roger Touchscreen Mic within 10 cm / 4" of Roger inspiro

**Remark:** the specific Roger Touchscreen Mic features (i.e. Mixing) will not be available in that configuration

How to know if the Roger Touchscreen Mic is the primary in the classroom network?

- On the upper left part of the display a "1" is displayed

More FAQs, visit [www.phonak.com](http://www.phonak.com)

## 20 Troubleshooting

### Problem

I cannot switch Roger Touchscreen Mic on

Roger Touchscreen Mic is turned on, but I cannot understand the talker

I cannot hear the talker's voice even though Roger Touchscreen Mic is switched on

I cannot hear the Roger Touchscreen Mic through my hearing devices and Roger receivers

I keep losing the audio signal

I cannot hear the signal from the multimedia device

### Causes

The battery is empty

The microphone is not positioned correctly

The microphone openings might be covered by fingers or clothing

The microphone has been muted

Incorrect hearing devices program

Receivers are not connected in the network

In case of multiple microphones, the primary microphone may not be switched on or may be out of range

Distance between Roger Touchscreen Mic and Roger receiver is too large

The volume of the multimedia device is too soft

### What to do

Recharge Roger Touchscreen Mic

Make sure Roger Touchscreen Mic is pointing towards the talker's mouth

Make sure the microphone openings are not covered by fingers, clothing or dirt

Check the indicator light – if it is red, briefly press the mute button to activate the microphone

Check that the hearing devices are set to the correct program (RogerReady/Roger/FM/DAI/EXT/AUX)

Connect the receivers into the network

Check the indicator light – if it is blinking blue, switch on the primary microphone and check that it is within range

Decrease distance between Roger devices and Roger Touchscreen Mic

Adjust volume in the multimedia device

---

**Problem**

---

I cannot hear my multimedia device

---

I cannot record my voice

---

Roger Touchscreen Mic's light is blinking red (double flash)

---

Roger Touchscreen Mic has stopped working

---

Roger Touchscreen Mic is near a computer, and computer Wi-Fi connection seems to be slow

---

"Frowning face" is displayed on Roger Touchscreen Mic

---

When the Roger Touchscreen Mic is lying on the table, indicator lights on Roger Pass-around are blinking blue and no voice can be heard

---

---

**Causes**

---

The audio source is muted

---

Audio settings are not correct

---

Its battery charge is low

---

Software issue

---

The Roger Touchscreen Mic and computer are too close

---

Device has suffered an internal error

---

When the device is lying on the table, Small Group mode is applied and connection to all secondary microphones and DigiMasters will be temporarily suspended

---

---

**What to do**

---

Unmute the audio source

---

Select Output (computer) in audio setting after tapping Settings button on the screen

---

Charge Roger Touchscreen Mic as soon as possible

---

Reboot Roger Touchscreen Mic by simultaneously pressing the On/Off and mute button for at least 8 seconds

---

Move Roger Touchscreen Mic's position to at least 1 meter away from the computer

---

Wait 30 seconds until the "frown" disappears. Device will reboot automatically

---

Wear the Roger Touchscreen Mic around the neck (lanyard mode)

---

## 21 Service and warranty

### Local warranty

Please ask the hearing care professional, where you purchased your device, about the terms of the local warranty.

### International warranty

Phonak offers a one-year limited international warranty, valid as of the date of purchase. This limited warranty covers manufacturing and material defects. The warranty is valid only if proof of purchase is shown.

### Warranty limitation

This warranty does not cover damage from improper handling or care, exposure to chemicals, immersion in water or undue stress. Damage caused by third parties or nonauthorized service centers renders the warranty null and void. This warranty does not cover any services performed by a hearing care professional in his/her office.

Serial number:

\_\_\_\_\_

Authorized hearing  
care professional  
(stamp/signature):

Date of purchase:

\_\_\_\_\_

\_\_\_\_\_

## 22 Compliance information

### Declaration of conformity

Hereby, Sonova Communications AG, Herrenschwandweg 4, CH-3280 Murten, declares that these Phonak products are in compliance with the essential requirements and other relevant provisions of Radio Equipment Directive 2014/53/EU. To obtain a copy of the EU Declaration of conformity, please contact the manufacturer or the local Phonak representative whose address can be taken from the list on [www.phonak.com](http://www.phonak.com) (worldwide locations).

Operation frequency: 2400 – 2483.5

MHzPower level: < 100 mW

**Notice 1:** This device complies with Part 15 of the FCC Rules and with RSS247 of Industry Canada. Operation is subject to the following two conditions: (1) This device may not cause harmful interference, and (2) this device must accept any interference received, including interference that may cause undesired operation.

**Notice 2:** Changes or modifications made to this device not expressly approved by Sonova Communications AG may void the FCC authorization to operate this device.

**Notice 3:** The device has been tested and found to comply with the limits for a Class B digital device, pursuant to Part 15 of the FCC Rules and ICES-003 of Industry Canada.

These limits are designed to provide reasonable protection against harmful interference in a residential installation. The device generates uses and can radiate radio frequency energy and, if not installed and used in accordance with the instructions, may cause harmful interference to radio communications. However, there is no guarantee that interference will not occur in a particular installation. If the device does cause harmful interference to radio or television reception, which can be determined by turning the device off and on, the user is encouraged to try to correct the interference by one of the following measures:

- Reorient or relocate the receiving antenna.
- Increase the separation between device and receiver.
- Connect the device into an outlet on a circuit different from that to which the receiver is connected.
- Consult the dealer or an experienced radio/TV technician for help.

**Notice 4:** FCC / Industry Canada RF Radiation Exposure Statement  
This device complies with FCC RF radiation exposure limits set forth for an uncontrolled environment. This transmitter must not be co-located or operating in conjunction with any other antenna or transmitter.

**Notice 5:** Japanese Radio Law Compliance. Business Law Compliance.  
This device is granted pursuant to the Japanese Radio Law (電波法). This device should not be modified (otherwise the granted designation number will become invalid).

## 23 Information and description of symbols



The CE symbol is the confirmation by Sonova Communications AG that this Phonak product is in compliance with the essential requirements and Radio Equipment Directive 2014/53/EU.



This symbol indicates that it is important for the user to read and take into account the relevant information in this user guide.



This symbol indicates that it is important for the user to pay attention to the relevant warning notices in this user guide.



Important information for handling and product safety.

**Operating conditions**

This device is designed such that it functions without problems or restrictions if used as intended, unless otherwise noted in this User Guide.



Australian EMC and Radiocommunications compliance label

**R-NZ**

The R-NZ compliance mark is the New Zealand compliance label for radio products.



Temperature transport and storage:  
-20° to 60° Celsius  
(-4° to +140° Fahrenheit)  
Temperature operation:  
0° to +45° Celsius  
+32° to +113° Fahrenheit



Humidity transportation: up to 90% (noncondensing)  
Humidity storage: 0% to 70%, if not in use  
Humidity operation: <95% (noncondensing)



Atmospheric pressure: 200 hPa to 1500 hPa



Keep dry





The symbol with the crossed-out garbage bin is to make you aware that this device may not be thrown away as normal household waste. Please dispose of old or unused device, at waste disposal sites intended for electronic waste, or give your device to your hearing care professional for disposal. Proper disposal protects the environment and health. This product has an embedded, non-replaceable battery. Do not attempt to open the product or remove the battery as this may cause injury and damage the product. Please contact the local recycling facility for removal of the battery.







The unlimited icon indicates that this product contains an unlimited number of Roger receivers for hearing aids with RogerDirect.

## 24 Important safety information

Please read the information on the following pages before using your Phonak device.

### 24.1 Hazard warnings

-  Keep this device out of reach of children aged under 3 years.
-  Opening the device might damage it. If problems occur that cannot be resolved by following the guidelines in the Troubleshooting section of this User Guide, consult your hearing care professional.
-  Your device should only be repaired by an authorized service center. Changes or modifications to this device that were not explicitly approved by Phonak are not permitted.
-  Please dispose of electrical components in accordance with your local regulations.

- ⚠ Do not use your device in areas where electronic equipment is prohibited. If in doubt, please ask the person in charge.
- ⚠ Device should not be used on aircrafts unless specifically permitted by flight personnel.
- ⚠ External devices should only be connected if they have been tested in accordance with corresponding IECXXXXX standards.
- ⚠ Only use accessories that are approved by Sonova AG.
- ⚠ Using your device's cables in any way contradictory to their intended purpose (e.g., wearing the USB cable around the neck) can cause injury.
- ⚠ When operating machinery, ensure that no parts of your device can get caught in the machine.
- ⚠ Do not charge device while it is on your body.
- ⚠ Caution: electric shock. Do not insert plug alone into electrical outlets.

## 24.2 Product safety information

- ⓘ Protect the device from excessive shock and vibration.
- ⓘ Do not expose your device to temperatures and humidity outside of the recommended conditions stated in this User Guide.
- ⓘ Never use a microwave or other heating devices to dry the device.
- ⓘ Clean the device using a damp cloth. Never use household cleaning products (washing powder, soap, etc.) or alcohol to clean the device.
- ⓘ Only recharge your device using chargers supplied by Phonak or by stabilized chargers providing 5 VDC and  $\geq 500$  mA.
- ⓘ Do not connect an USB or audio cable to your device that exceeds 3 meters (9 feet) in length.

- ① Protect the device from excessive moisture (bathing, swimming), heat (radiator, car dashboard), and direct contact with skin when sweating (workout, fitness, sport).
- ① X-ray radiation, CT or MRI scans may destroy or adversely affect the correct functioning of the device.
- ① Do not use excessive force when connecting your device to its different cables.
- ① Never manipulate the device with sharp tools to avoid the risk of damaging it.
- ① Protect all openings (microphones, audio input and charger) from dirt and debris.
- ① If the device has been dropped or damaged, if it overheats during charging, has a damaged cord or plug, or has been dropped into liquid, stop using your device and contact your hearing care professional.

- ① The device has a built-in rechargeable battery. This battery can be charged and discharged hundreds of times but may eventually wear out. The battery may then only be replaced by authorized personnel.

### 24.3 Other important information

- Persons with pacemakers or other medical devices should ALWAYS consult their physician or the manufacturer of their device BEFORE using the device. The use of the device with a pacemaker or other medical devices should ALWAYS be in accordance with the safety recommendations of the physician responsible for your pacemaker or the pacemaker manufacturer.
- Device collects and stores internal technical data. This data may be read by a hearing care professional in order to check the device, as well as to help you use your device correctly.
- The digital signal sent from the device to a connected receiver cannot be overheard by other devices which are not in the microphone's network.





**Manufacturer:**

Sonova Communications AG

Herrenschwandweg 4

CH-3280 Murten

Switzerland

[www.phonak.com/roger](http://www.phonak.com/roger)



7 613389 760644 >