

Roger On™ iN V2

Technical data.

roger

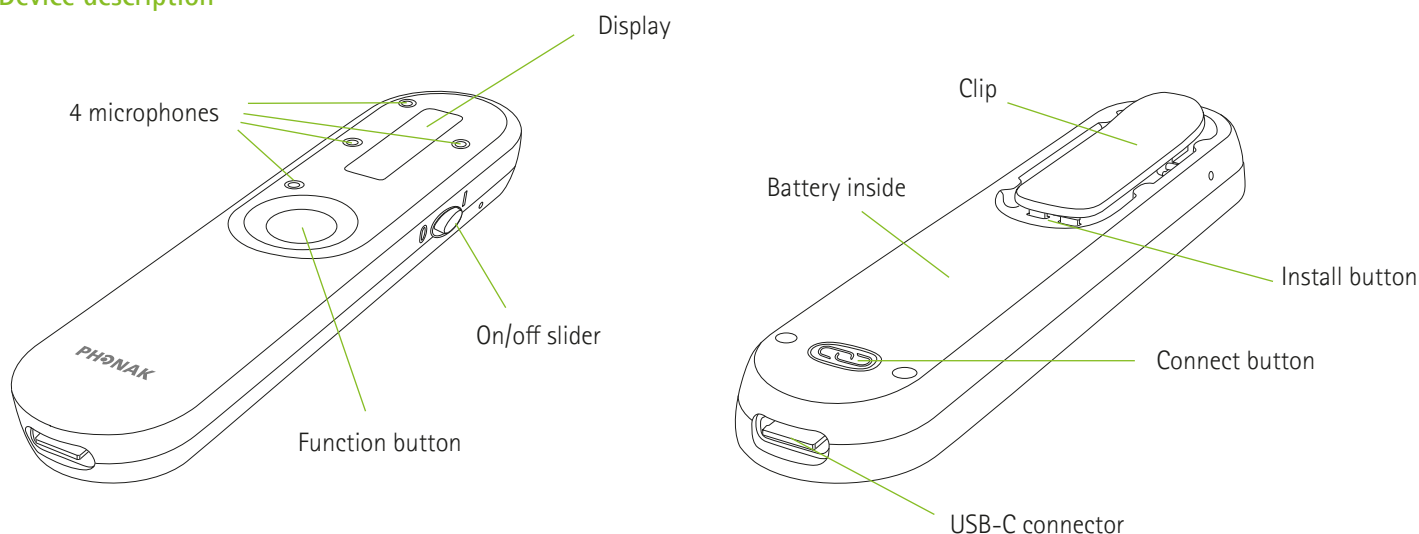
Roger On is a versatile microphone dedicated for all conversation where background noise is present or when there the talker is at a distance. It features MultiBeam 2.0 Technology and Pointing mode 2.0. Personalization and remote control of the Roger On is easy with the new myRogerMic app. Roger On is compatible with all hearing devices with RogerDirect™ and all Roger receivers.

Technical data

Type	Roger microphone
Dimensions (L x W x H)	99.7 x 23.5 x 13.6 mm (3.93 x 0.93 x 0.54")
Weight	27 g (0.95 oz)
Color options	Champagne, Graphite Gray
Included accessories	Power supply with USB cable, docking station, optical audio cable, analog audio cable, lanyard, case
Operating conditions	0° to +40° Celsius (+32° to +104° Fahrenheit) Relative humidity of <90% (non-condensing)
Transport and storage conditions	-20° to +60° Celsius (-4° to +140° Fahrenheit) Relative humidity of 90% for a long period of time



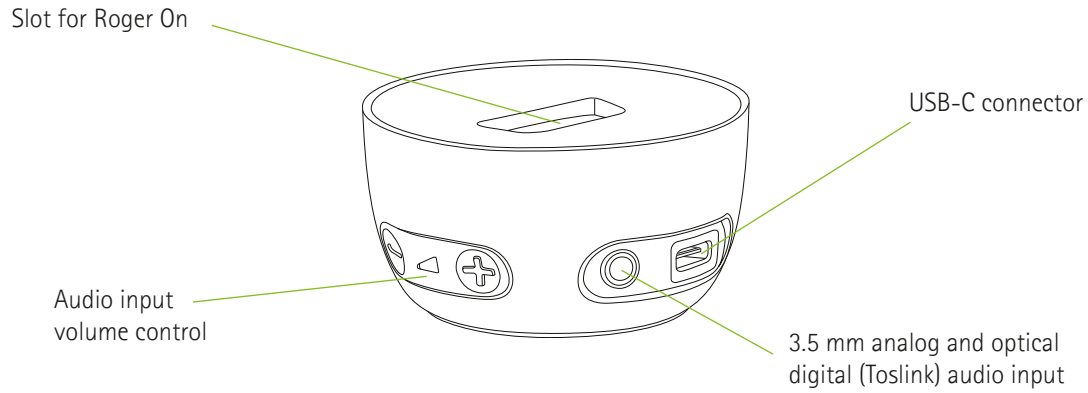
Device description



A Sonova brand

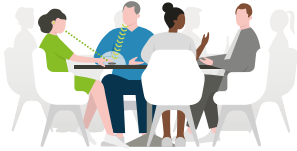
PHONAK
life is on

Docking station description



Use cases

On the table



Restaurant

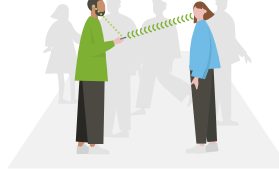


Meeting

Hold in the hand (pointing)

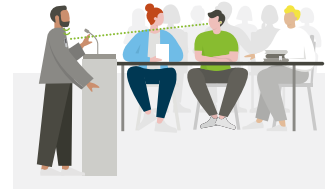


Party

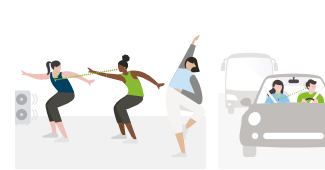


Face-to-face

Worn by a presenter / talker



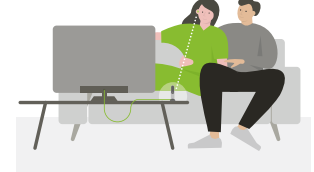
Presentation / lecture



Class

Car

Streaming audio



Watching TV / streaming audio



Online calls

Features

- Proven Roger speech-in-noise performance¹
- MultiBeam 2.0 Technology with RogerDirect / MultiBeam Technology with other Roger receivers
- Orientation independent presenter mode
- Pointing mode 2.0
- Audio input for multimedia
- Multiple microphone use in a network (MultiTalker Network)
- Protected against splash and dust IP54
- App for beam steering and remote control
- New with Roger On V2: Headset mode for online calls

Roger installation

Roger On iN contains two Roger receivers that can be installed into a pair (two) of hearing devices with RogerDirect.

myRogerMic app



App Store badge is a trademark of Apple Inc., registered in the U.S. and other countries.
Google Play and the Google Play logo are trademarks of Google LLC.

Microphone characteristics

Number of microphones	4
Microphone modes	Table, Pointing, Presenter

Radio information

Streaming technology	Roger technology
Frequency range	2.4 GHz ISM band including adaptive automatic frequency hopping
RF power	100 mW max.
Transmission range (clear line of sight, free field)	Up to 25 meters / 80 feet

Audio information

Audio input	Digital and analog via USB-C socket
Two-way audio	Digital via USB-C socket
Audio input docking station	- Digital optical (Toslink) - Analog via 3.5 mm socket
Supported digital formats	Stereo (PCM)
Max. analog voltage	1 Vrms
Audio bandwidth	100 Hz – 7.3 kHz

Power supply

Type	DC, stabilized
Primary voltage	100-240 V
Secondary voltage	5 VDC
Max. current	1.0 A
Plug	USB-C
Important notice	Only use the original USB Phonak power supply 5VDC, > 500 mA

Battery

Type	Lithium Polymer
Capacity	260 mAh
Voltage	3.7 V
Operating time	8h when using hearing device with RogerDirect 6h when using Roger receiver

Receiver compatibility

Compatible Roger receivers	All personal Roger receivers, except SoundField
Max. connected receivers	Unlimited

Microphone compatibility (MultiTalker Network)

A Roger On in a MultiTalker Network functions only in Presenter mode (hanging around the neck or clipped on the chest)

Compatible Roger microphones	Roger On™ Roger Select™ Roger Table Mic II Roger Clip-On Mic Roger On™ iN Roger Select™ iN Roger Table Mic II iN
Max. connected microphones	Up to 10

Standards

Europe	EN 300 328, EN 301 489, EN 62368-1, IEC/EN 62311
Canada	RSS-247, RSS-102
Japan	ARIB-T66
USA	CFR 47, part 15.247, FCC OET Bulletin No.65

Ingress protection

IP54	Protected against splash and dust
------	-----------------------------------

¹ Thibodeau L. M. (2020). Benefits in Speech Recognition in Noise with Remote Wireless Microphones in Group Settings. Journal of the American Academy of Audiology, 31(6), 404-411.