

Accessories and Charger Update 2.2

February 2023

Installer User Guide

The Accessories and Charger Update application is intended to be used by qualified hearing care professionals to upgrade the firmware of the TV Connector, Partner Mic and Charger Case Go.

This user guide explains how to install Accessories and Charger Update application.

Note that the name of the executable "TVConnectorUpgrader.exe" does not reflect the name of all devices supported by the application. This will be changed in the next release but has no impact on application behavior.

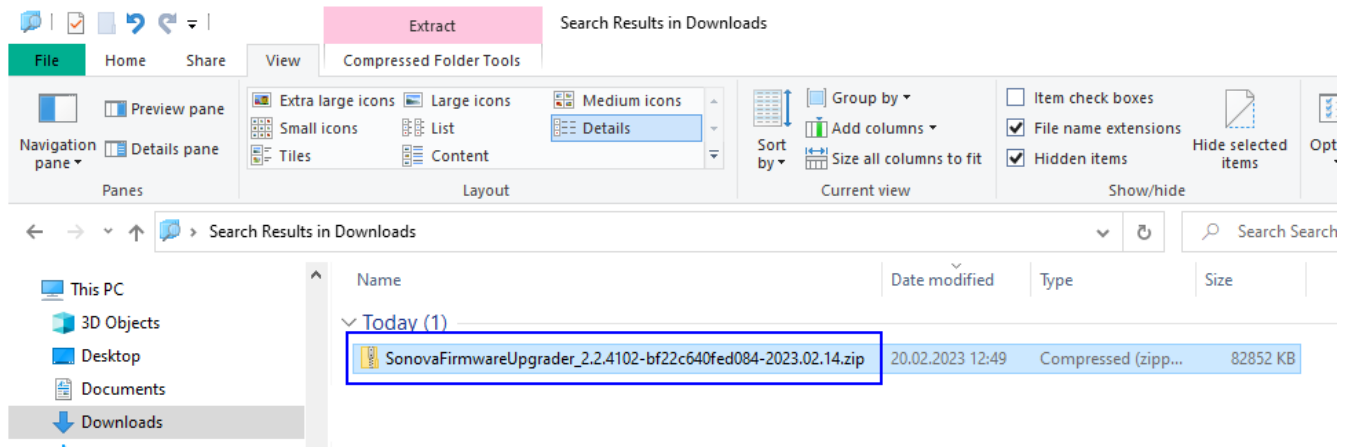
Table of Contents

Download	2
Installation.....	2
Start the application	6
Connect a device, for example Charger Case Go.....	7
Upgrade.....	8
Firmware already up to date.....	9
Application User Guide	10

Download

You should have received a link to download the installer which is contained in a zip file, for example the release **SonovaFirmwareUpgrader_2.2.4102**

SonovaFirmwareUpgrader_2.2.4102-bf22c640fed084-2023.02.14.zip.

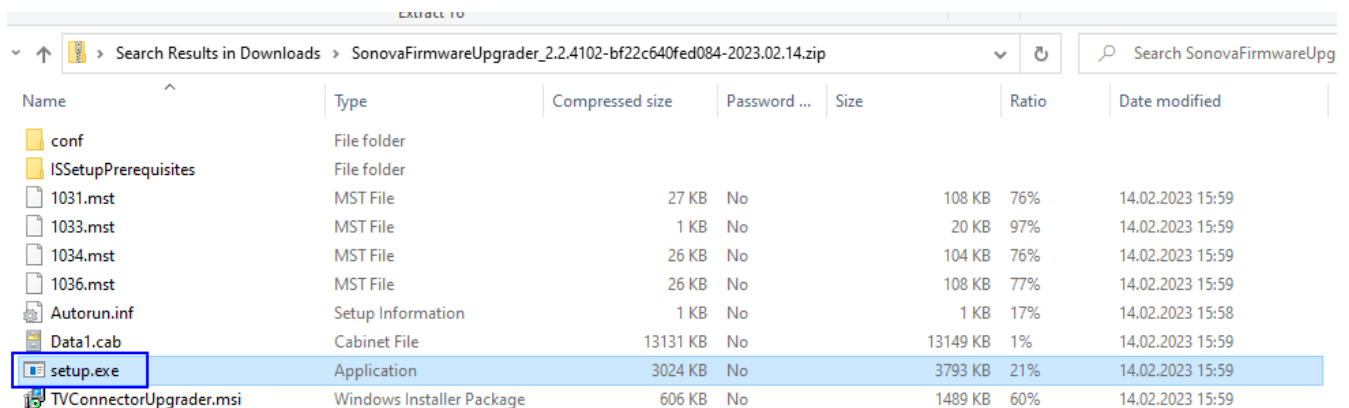


Installation

Once downloaded, select the file and double click on it.

The content of the installer is displayed.

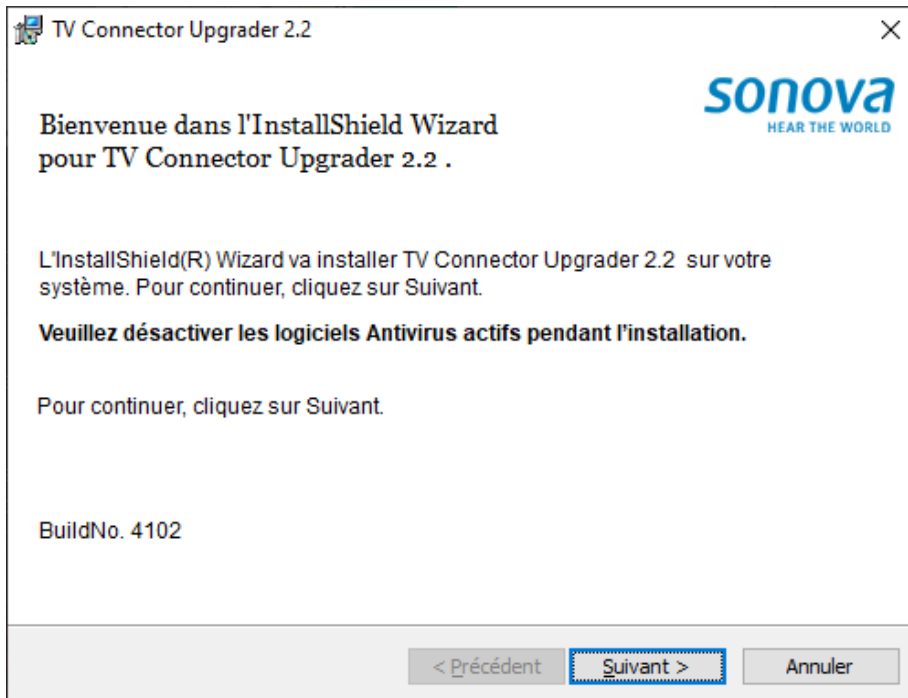
Select **setup.exe** and double click on it.



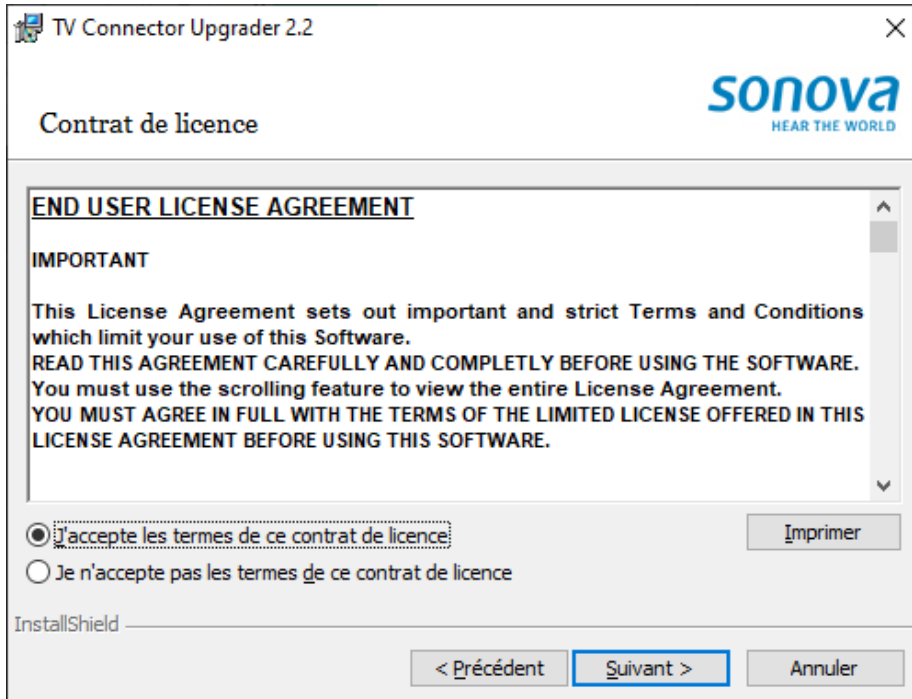
Follow the instruction displayed on the screen by the installer.

Note:

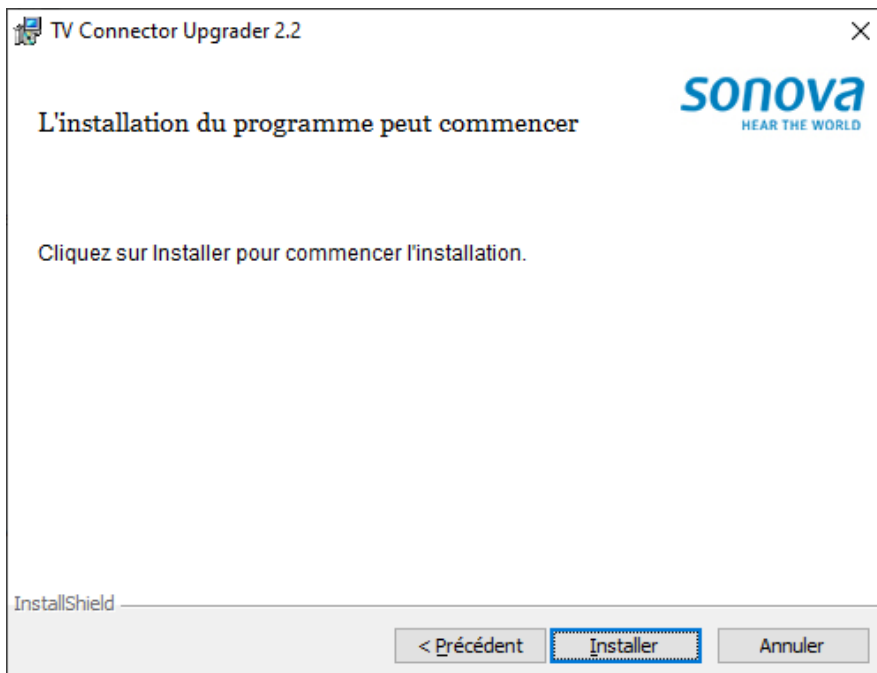
The text that appears in the installer windows is in the language you have selected for Windows. In the examples below in French.



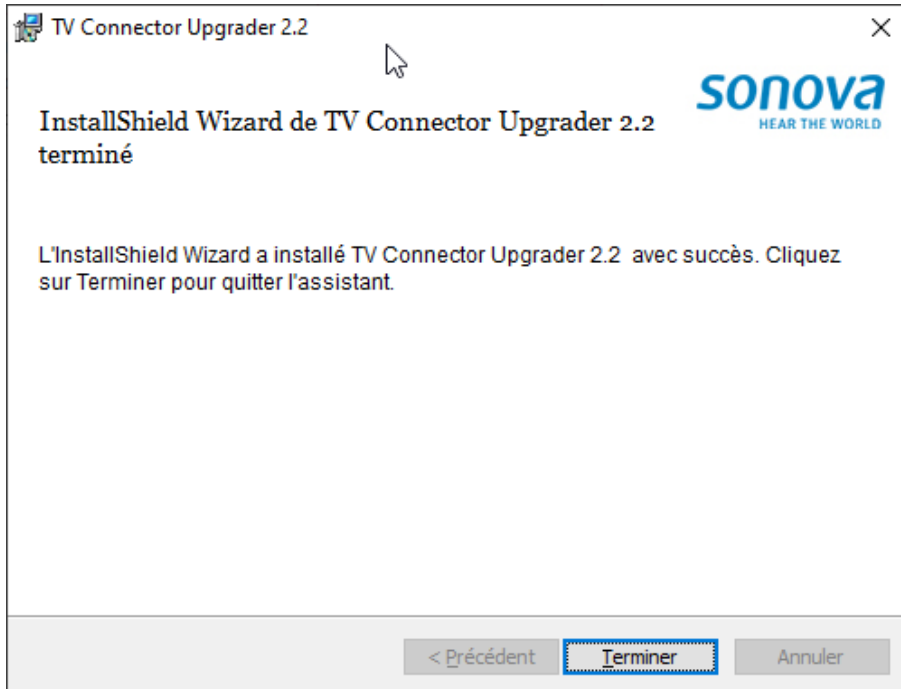
Click "Next".



Select “I accept the terms of the license agreement”.



Click on “Install” to start the installation.



Click on "Finish" to complete the installation.

Start the application

You should find a new icon on your desktop named “TV Connector Upgrader”.



Double click on it to start the application.

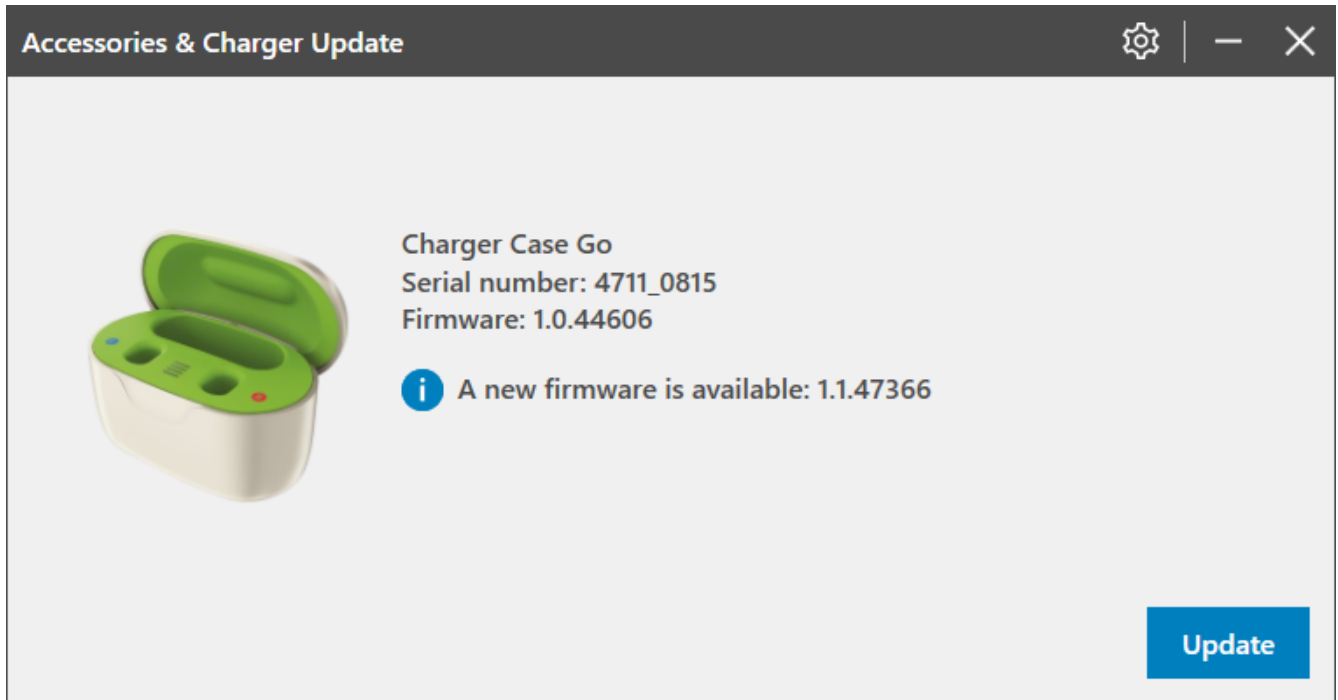
The below window is displayed.



Connect a device, for example Charger Case Go

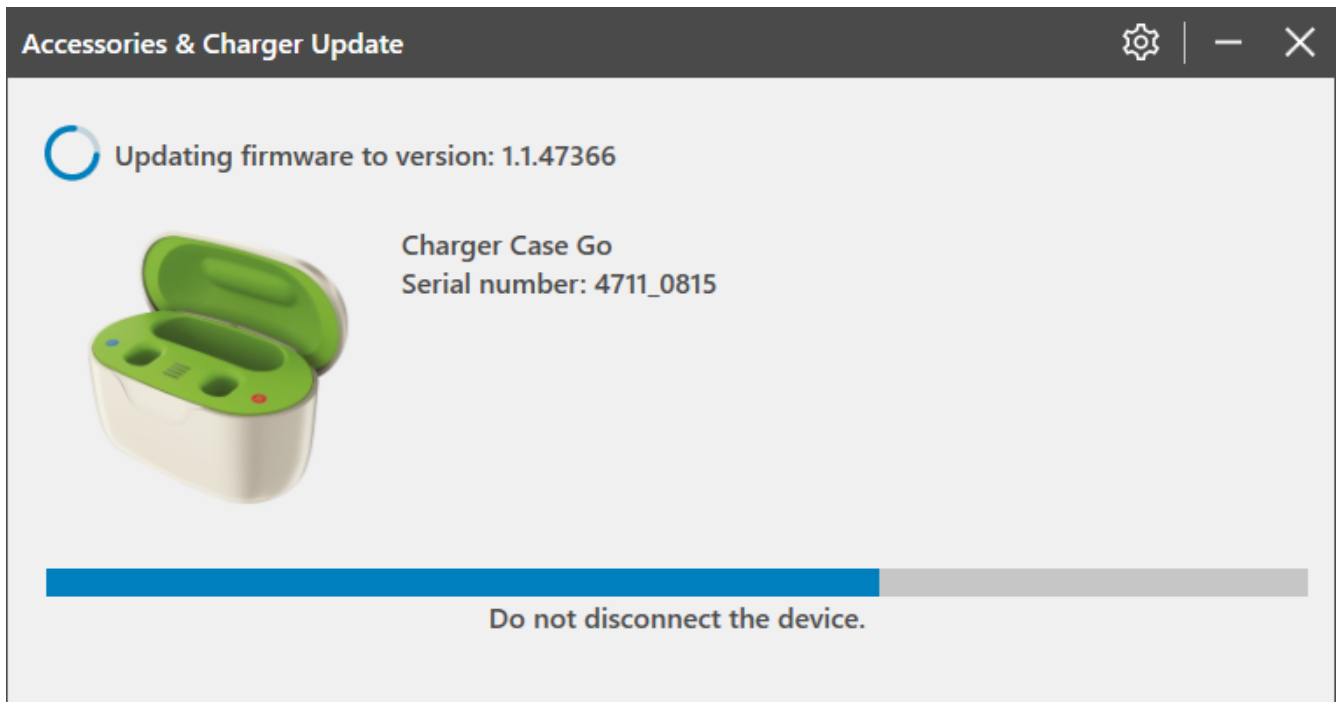
Using a USB cable connected to the PC, connect the charger or another supported device.

The application informs the user that a new firmware is available.

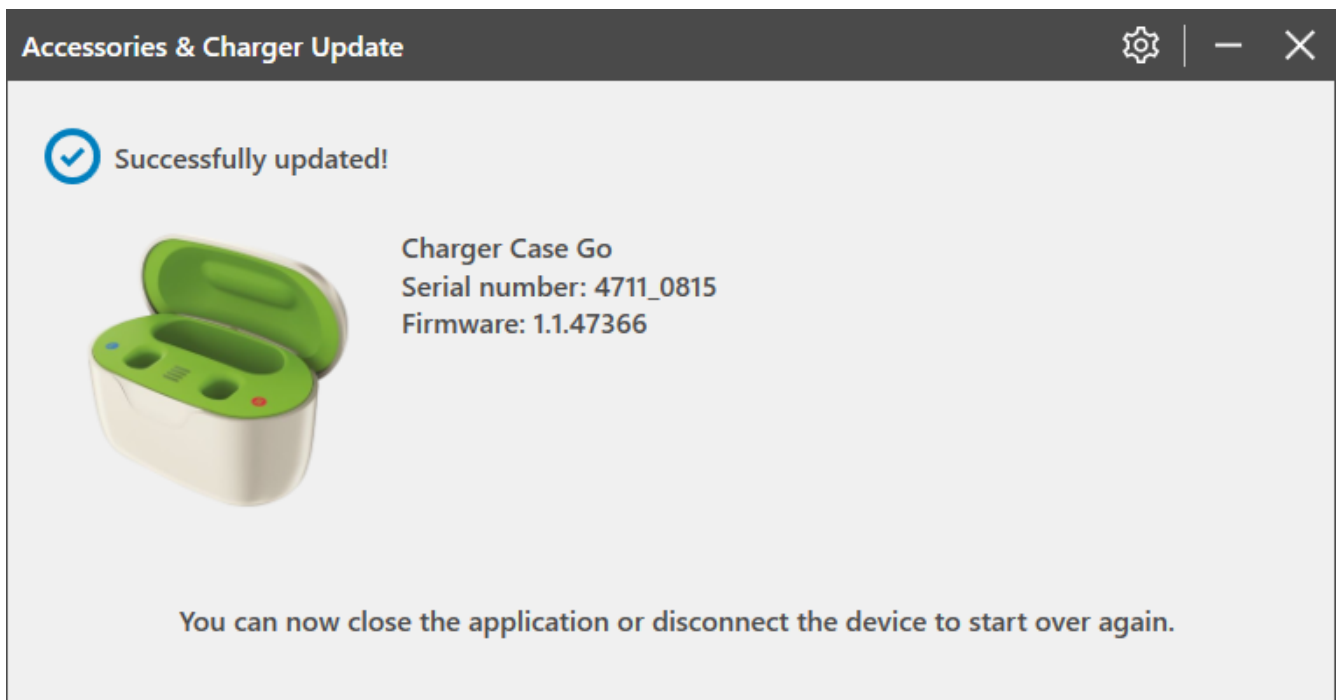


Device Firmware Upgrade

Click **[Update]** button to start the firmware upgrade.

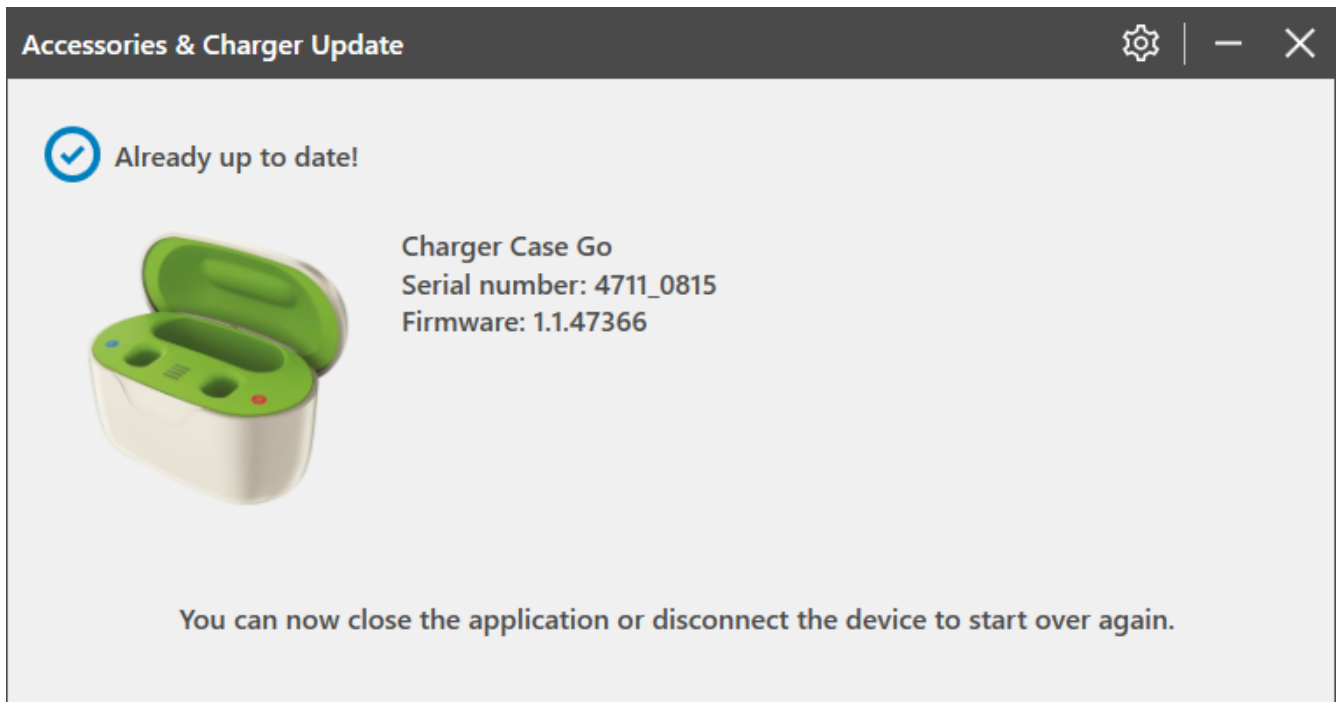


When the firmware upgrade is completed, you can unplug your device to start over again with another one.



Firmware already up to date

In case the firmware is already up to date, the following window is displayed, and the user has nothing to do.



Application User Guide

For more information about the application, please read the Application User Guide.

Click the gear.



Select "User guide".

The User's Guide opens.