

# iSense Micro

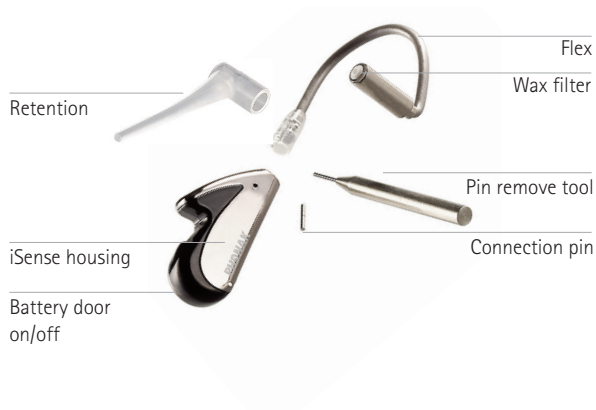
## Technical Data

### iSense Micro features

- Dynamic FM
- Ergonomic micro-style design
- Flexible, left/right compatible wearing concept for comfortable and secure use
- Small, flexible receiver attached to a robust housing, available in various colors
- 312 battery
- A volume control on the **inspiro** allows adjustment of the iSense Micro audio volume remotely
- On/off function integrated in battery door
- Automatic frequency Synchronisation (AFC) with WallPilot
- Direct frequency synchronization (DFS)
- Fully programmable with FM SuccessWare 4.2 or higher
- Compatible with **inspiro** and other Phonak FM transmitter



**iSense Micro** is a micro-style, state-of-the-art FM receiver based on Dynamic FM, the new global FM standard from Phonak. Its miniaturized and high-tech design makes the iSense Micro the ideal product for all customers who ask for a discreet and trendy solution.



### Color options:



Green with Envy



Fiery Temper



Raku Glaze



Snowblade



Classic Caddy



Firebird

### Relevant internet pages

Your online comprehensive FM support tool for schools  
[www.eSchoolDesk.com](http://www.eSchoolDesk.com)

Latest set-up tips for FM systems in combination with hearing instruments and Cochlear implants.  
[www.phonak.com/FM\\_Configurator](http://www.phonak.com/FM_Configurator)

Your online FM knowledge base  
[www.FMELibrary.com](http://www.FMELibrary.com)

Your online FM counseling support tool  
[www.FMCounselWare.com](http://www.FMCounselWare.com)

# iSense Micro

## General data

Type:	Dynamic FM receiver
Length (without flex):	25 mm
Width:	6 mm
Height:	12 mm
Weight (without battery):	2.1 g
Operating temperature range:	-10°C – +60°C

## HF characteristics

Frequency range:	169.4 – 176 MHz (H-band) 214 – 220 MHz (N-band)
Frequency:	Multi-channel, quartz stabilized
Frequency stability:	Better than +/-10ppm
Modulation:	FM (narrow band) Max. frequency deviation $\Delta f = 8\text{kHz}$
Antenna:	Ear level FM antenna
Sensitivity at E = 3mV/m:	SINAD $\geq 15\text{ dB}$
Selectivity at $\Delta f_{RX} = \pm 125\text{kHz}$ :	$> 50\text{ dB}$

## Power management

312 battery:	140 – 150 mAh
Battery operating life:	40 – 50 hours

## Standards

Radiocom:	EN 300.422
EMC:	EN 301.489
	FCC

## Audio characteristic

Frequency Bandwidth	<100 – 5800 Hz
Total harmonic distortion	<2% @ 1kHz

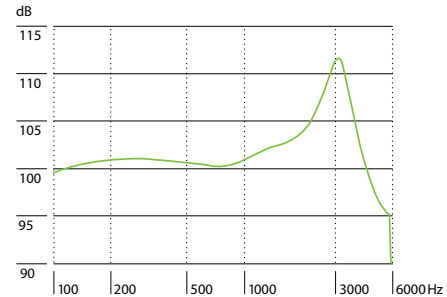
### Ear simulator data

Max. output sound pressure level (Input 4kHz FM deviation)

#### Frequency response

— Max. gain (Input 4 kHz FM deviation)

Maximum 112 dB SPL



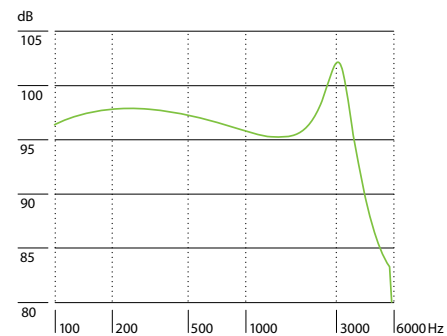
### 2 cm<sup>3</sup> coupler data

Max. output sound pressure level (Input 4kHz FM deviation)

#### Frequency response

— Max. gain (Input 4 kHz FM deviation)

Maximum 102 dB SPL



## Dynamic FM System data for inspiro and Dynamic FM receivers

### Adaptive FM Advantage (AFMA): (Ambient noise level $\geq 73\text{ dB SPL}$ )

Additional output gain: 15 dB

### Voice Activity Detection (VAD):

Attack time: 5 ms

Hold-on time: 5 seconds

Release time: 2 seconds

Voice off attenuation: -26 dB

### Wireless sub-audio datalink

Frequency range: Above the audio band

Operating range: As FM operating range

### Wireless programming, monitoring and setting of FM Advantage:

FSK Link: Frequency 40.96 kHz / Data rate 1000 – 2000 Bit/s  
Link from the **inspiro** to the receivers

OOK Link: Frequency 8.192 kHz / Data rate 1024 Bit/s  
Link from the receivers to the **inspiro**

Operating range: 20 cm / 8 inches

### MultiTalker Network\*:

Digital network for up to 10 Speakers

Frequency: 2.4 GHz / Data rate 2 MBits/s

Operating range between the **inspiro** transmitters: 8 m

\* Also available if **inspiro** is used with traditional FM receivers.